

## Recombinant Human SNCα Protein(Trx Tag)

**Catalog Number:** PDEH101110

**Note:** Centrifuge before opening to ensure complete recovery of vial contents.

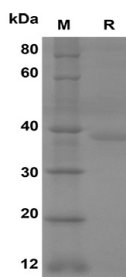
### Description

<b>Species</b>	Human
<b>Source</b>	E.coli-derived Human SNCα protein Met1-Ala140, with an N-terminal Trx
<b>Calculated MW</b>	35.2 kDa
<b>Observed MW</b>	37 kDa
<b>Accession</b>	P37840
<b>Bio-activity</b>	Not validated for activity

### Properties

<b>Purity</b>	> 90% as determined by reducing SDS-PAGE.
<b>Endotoxin</b>	< 10 EU/mg of the protein as determined by the LAL method
<b>Storage</b>	Generally, lyophilized proteins are stable for up to 12 months when stored at -20 to -80 °C. Reconstituted protein solution can be stored at 4-8°C for 2-7 days. Aliquots of reconstituted samples are stable at < -20°C for 3 months.
<b>Shipping</b>	This product is provided as lyophilized powder which is shipped with ice packs.
<b>Formulation</b>	Lyophilized from a 0.2 μm filtered solution in PBS with 5% Trehalose and 5% Mannitol.
<b>Reconstitution</b>	It is recommended that sterile water be added to the vial to prepare a stock solution of 0.5 mg/mL. Concentration is measured by UV-Vis.

### Data



SDS-PAGE analysis of Human SNCα proteins, 2μg/lane of Recombinant Human SNCα proteins was resolved with SDS-PAGE under reducing conditions, showing bands at 37 kDa

### Background

Alpha-Synuclein (SNCA) is a member of the Synuclein family. SNCA is expressed principally in brain but also expressed in low concentrations in all tissues except liver. SNCA interacts with UCHL1, Phospholipase D and histones. SNCA can include beta- and gamma-synuclein. In addition, SNCA is an important regulatory component of vesicular transport in neuronal cells. It has been suggested that SNCA is related to the pathogenesis of Parkinson's Disease and neurodegenerative disorders. Defects in SNCA will lead to Dementia Lewy Body (DLB).

### For Research Use Only

Toll-free: 1-888-852-8623  
Web: [www.elabscience.com](http://www.elabscience.com)

Tel: 1-832-243-6086  
Email: [techsupport@elabscience.com](mailto:techsupport@elabscience.com)

Fax: 1-832-243-6017

Rev. V1.1