

## Recombinant OPA1 Monoclonal Antibody

catalog number: **AN301265L**

**Note:** Centrifuge before opening to ensure complete recovery of vial contents.

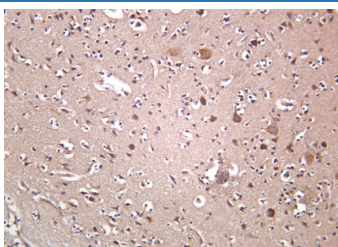
### Description

|                     |   |
|---------------------|---|
| <b>Reactivity</b>   | Human;Mouse;Rat   |
| <b>Immunogen</b>    | Recombinant Human OPA1 protein                                  |
| <b>Host</b>         | Rabbit  |
| <b>Isotype</b>      | IgG, $\kappa$   |
| <b>Clone</b>        | B1028   |
| <b>Purification</b> | Protein A   |
| <b>Buffer</b>       | PBS, 50% glycerol, 0.05% Proclin 300, 0.05% protein protectant. |

### Applications

| Applications | Recommended Dilution |
|--------------|----------------------|
| IHC          | 1:1000-1:4000        |
| WB           | 1:10000-1:50000      |
| IF           | 1:200-1:1000         |
| ELISA        | 1:5000-1:20000       |

### Data



Immunohistochemistry of paraffin-embedded rat brain using  
Recombinant OPA1 Monoclonal Antibody at dilution of  
1:200.

### Preparation & Storage

|                 |   |
|-----------------|---|
| <b>Storage</b>  | Store at -20°C Valid for 12 months. Avoid freeze / thaw cycles. |
| <b>Shipping</b> | Ice bag   |

### Background

This gene product is a nuclear-encoded mitochondrial protein with similarity to dynamin-related GTPases. It is a component of the mitochondrial network. Mutations in this gene have been associated with optic atrophy type 1, which is a dominantly inherited optic neuropathy resulting in progressive loss of visual acuity, leading in many cases to legal blindness. Multiple transcript variants encoding different isoforms have been found for this gene.

### For Research Use Only