

## Recombinant Human Ephrin-A1/EFNA1 Protein (Fc Tag)

**Catalog Number:** PKSH032389

**Note:** Centrifuge before opening to ensure complete recovery of vial contents.

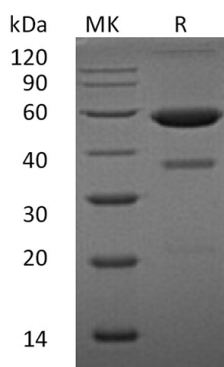
### Description

<b>Species</b>	Human
<b>Source</b>	HEK293 Cells-derived Human Ephrin-A1;EFNA1 protein Asp19-Ser182, with an C-terminal Fc
<b>Calculated MW</b>	46.5 kDa
<b>Observed MW</b>	55-60 kDa
<b>Accession</b>	AAH32698.1
<b>Bio-activity</b>	Not validated for activity

### Properties

<b>Purity</b>	> 85 % as determined by reducing SDS-PAGE.
<b>Endotoxin</b>	< 1.0 EU per µg of the protein as determined by the LAL method.
<b>Storage</b>	Generally, lyophilized proteins are stable for up to 12 months when stored at -20 to -80 °C. Reconstituted protein solution can be stored at 4-8°C for 2-7 days. Aliquots of reconstituted samples are stable at < -20°C for 3 months.
<b>Shipping</b>	This product is provided as lyophilized powder which is shipped with ice packs.
<b>Formulation</b>	Lyophilized from a 0.2 µm filtered solution of PBS, pH 7.4. Normally 5% - 8% trehalose, mannitol and 0.01% Tween 80 are added as protectants before lyophilization.
<b>Reconstitution</b>	Please refer to the specific buffer information in the printed manual.

### Data



> 85 % as determined by reducing SDS-PAGE.

### Background

Ephrin-A1 is a member of the A-type ephrin family of cell surface proteins that function as ligands for the A-type Eph receptor tyrosine kinase family. Ephrin-A1 can be induced by TNF and IL1B. Its expression levels can be down-regulated in primary glioma tissues compared to the normal tissues. The soluble monomeric form is expressed in the glioblastoma multiforme (GBM) and breast cancer cells. Soluble Ephrin-A1 is necessary for the transformation of HeLa and SK-BR3 cells and participates in the relocalization of EPHA2 away from sites of cell-cell contact during transformation. Ephrin-A1 plays an important role in angiogenesis and tumor neovascularization.

### For Research Use Only