

EGFL8 Polyclonal Antibody

catalog number: E-AB-14055

Note: Centrifuge before opening to ensure complete recovery of vial contents.

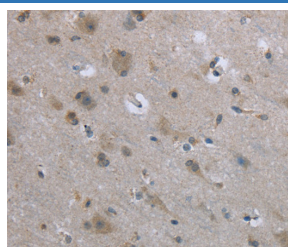
Description

Reactivity	Human;Mouse;Rat
Immunogen	Recombinant protein of human EGFL8
Host	Rabbit
Isotype	IgG
Purification	Affinity purification
Buffer	Phosphate buffered solution, pH 7.4, containing 0.05% stabilizer and 50% glycerol.

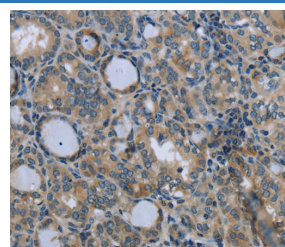
Applications Recommended Dilution

IHC	1:50-1:200
------------	------------

Data



Immunohistochemistry of paraffin-embedded Human brain tissue using EGFL8 Polyclonal Antibody at dilution 1:40



Immunohistochemistry of paraffin-embedded Human thyroid cancer tissue using EGFL8 Polyclonal Antibody at dilution 1:40

Preparation & Storage

Storage	Store at -20°C Valid for 12 months. Avoid freeze / thaw cycles.
Shipping	The product is shipped with ice pack, upon receipt, store it immediately at the temperature recommended.

Background

The epidermal growth factor (EGF) repeat-containing proteins constitute an expanding family of proteins that are involved in several cellular activities, such as blood coagulation, fibrinolysis, cell adhesion, and neural and vertebrate development. EGFL8 (EGF-like domain-containing protein 8), also known as C6orf8, NG3 and VE-statin-2, is a 293 amino acid secreted protein that contains two EGF-like domains and one EMI domain. Via its EGF and EMI domains, EGFL8 may participate in protein-protein interactions that correlate with cellular proliferation and developmental signaling events. In mice, EGFL8 is expressed predominately in brain, kidney, lung and thymus.

For Research Use Only