

Galectin 3 Monoclonal Antibody

catalog number: **E-AB-22006**

Note: Centrifuge before opening to ensure complete recovery of vial contents.

Description

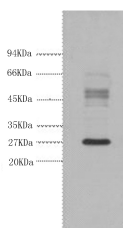
Reactivity	Human
Immunogen	Synthetic Peptide
Host	Mouse
Isotype	IgG
Clone	1A2
Purification	Protein A purification
Buffer	Phosphate buffered solution, pH 7.4, containing 0.05% stabilizer, 0.5% protein protectant and 50% glycerol.

Applications

Recommended Dilution

WB	1:1000-1:3000
IHC	1:100-1:300
IF	1:100-200

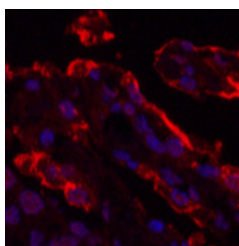
Data



Western Blot analysis of HeLa cells using Galectin 3 Monoclonal Antibody at dilution of 1:3000.

Observed-MW:26 kDa

Calculated-MW:26 kDa



Immunofluorescence analysis of Human lung cancer tissue using Galectin 3 Monoclonal Antibody at dilution of 1:200.



Immunohistochemistry of paraffin-embedded Human thyroid tissue using Galectin 3 Monoclonal Antibody at dilution of 1:200.

Preparation & Storage

Storage	Store at -20°C Valid for 12 months. A void freeze / thaw cycles.
Shipping	The product is shipped with ice pack, upon receipt, store it immediately at the temperature recommended.

Background

For Research Use Only

Galactose-specific lectin which binds IgE. May mediate with the alpha-3, beta-1 integrin the stimulation by CSPG4 of endothelial cells migration. Together with DMBT1, required for terminal differentiation of columnar epithelial cells during early embryogenesis.

For Research Use Only

Toll-free: 1-888-852-8623
Web: www.elabscience.com

Tel: 1-832-243-6086
Email: techsupport@elabscience.com

Fax: 1-832-243-6017

Rev. V1.7