

Recombinant Mouse CD6 Protein(Fc Tag)

Catalog Number: PDMM100091

Note: Centrifuge before opening to ensure complete recovery of vial contents.

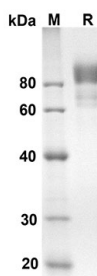
Description

Species	Mouse
Source	Mammalian-derived Mouse Cd6 protein Gly17-Thr398, with an C-terminal Fc
Calculated MW	66.9 kDa
Observed MW	80-100 kDa
Accession	Q61003
Bio-activity	Not validated for activity

Properties

Purity	> 90% as determined by reducing SDS-PAGE.
Endotoxin	< 1.0 EU/mg of the protein as determined by the LAL method
Storage	Generally, lyophilized proteins are stable for up to 12 months when stored at -20 to -80°C. Reconstituted protein solution can be stored at 4-8°C for 2-7 days. Aliquots of reconstituted samples are stable at < -20°C for 3 months.
Shipping	This product is provided as lyophilized powder which is shipped with ice packs.
Formulation	Lyophilized from a 0.2 µm filtered solution in PBS with 5% Trehalose and 5% Mannitol.
Reconstitution	It is recommended that sterile water be added to the vial to prepare a stock solution of 0.5 mg/mL. Concentration is measured by UV-Vis.

Data



SDS-PAGE analysis of Mouse Cd6 proteins, 2 µg/lane of Recombinant Mouse Cd6 proteins was resolved with an SDS-PAGE under reducing conditions, showing bands at 66.9 kDa.

Background

For Research Use Only

Toll-free: 1-888-852-8623
Web: www.elabscience.com

Tel: 1-832-243-6086
Email: techsupport@elabscience.com

Fax: 1-832-243-6017

T-cell differentiation antigen CD6, also known as TP12 and CD6, is a single-pass type I membrane protein which contains three SRCR domains. CD6 / TP12 is a cell surface glycoprotein expressed primarily on T cells, it may function as a costimulatory molecule and may play a role in autoreactive immune responses. CD6 / TP12 is expressed by thymocytes, mature T-cells, a subset of B-cells known as B-1 cells, and by some cells in the brain. CD6 ligand termed CD166 (previously known as activated leukocyte cell adhesion molecule, ALCAM) has been identified and shown to be expressed on activated T cells, B cells, thymic epithelium, keratinocytes, and in rheumatoid arthritis synovial tissue. CD6 / TP12 binds to activated leukocyte cell adhesion molecule (CD166), and is considered as a costimulatory molecule involved in lymphocyte activation and thymocyte development. CD6 / TP12 partially associates with the TCR / CD3 complex and colocalizes with it at the center of the mature immunological synapse (IS) on T lymphocytes. During thymic development CD6-dependent signals may contribute both to thymocyte survival, and to the overall functional avidity of selection in both man and Mouse.

For Research Use Only

Toll-free: 1-888-852-8623
Web: www.elabscience.com

Tel: 1-832-243-6086
Email: techsupport@elabscience.com

Fax: 1-832-243-6017