

# Elab Fluor<sup>®</sup> 488-conjugated GFP Tag Monoclonal Antibody

catalog number: AN00432L



**Note:** Centrifuge before opening to ensure complete recovery of vial contents.

## Description

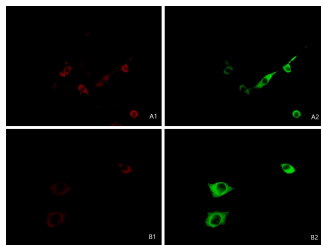
<b>Reactivity</b>	All
<b>Immunogen</b>	GFP tag fusion protein
<b>Host</b>	Mouse
<b>Isotype</b>	IgG2a
<b>Clone</b>	7C4
<b>Purification</b>	Protein A/G Purification
<b>Conjugation</b>	Elab Fluor <sup>®</sup> 488(Ex/Em:493 nm/519 nm)
<b>buffer</b>	PBS with 0.05% proclin 300, 1% protective protein and 50% glycerol,pH7.4

## Applications

## Recommended Dilution

<b>IF</b>	1:500-1:2000
-----------	--------------

## Data



Immunofluorescent analysis of 3T3-L1 cells transfected with a GFP-tag(green) using Elab Fluor<sup>®</sup> 594-conjugated GFP Tag Monoclonal Antibody(red) or Elab Fluor<sup>®</sup> 488-conjugated GFP Tag Monoclonal Antibody(green)at dilution of 1:2000. A1,A2:the primary antibody is GFP-594,the cells are 3T3-L1 A1:GFP-594 excitation,A2:488 excitation(GFP autofluorescence) B1,B2:the primary antibody is GFP-594 and GFP-488,the cells are 3T3-L1 B1:GFP-594 excitation,B2:GFP-488 excitation

## Preparation & Storage

<b>Storage</b>	Store at -20°C Valid for 12 months. Avoid freeze / thaw cycles. Protected from prolonged exposure to light.
<b>Shipping</b>	The product is shipped with ice pack, upon receipt, store it immediately at the temperature recommended.

## Background

The green fluorescent protein (GFP) is a protein that exhibits bright green fluorescence when exposed to light in the blue to ultraviolet range. It is first isolated from the jellyfish *Aequorea victoria* and is frequently used as a reporter of expression. GFP is widely used in gene expression, tracing and protein subcellular localization.

## For Research Use Only

A Reliable Research Partner in Life Science and Medicine  
Tel: 400-999-2100

Email:[techsupport@elabscience.cn](mailto:techsupport@elabscience.cn)

Web:[www.elabscience.cn](http://www.elabscience.cn)

Rev. V1.2