

## Recombinant Mouse IFN-zeta/Limitin Protein (His Tag)

**Catalog Number: PKSM041065**

**Note:** Centrifuge before opening to ensure complete recovery of vial contents.

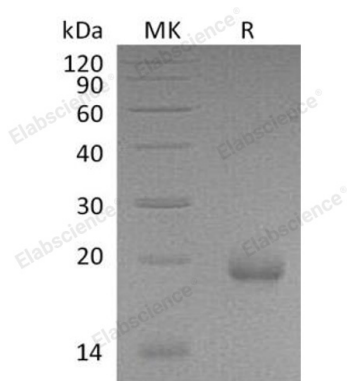
### Description

<b>Species</b>	Mouse
<b>Source</b>	HEK293 Cells-derived Mouse IFN-zeta/Limitin protein Leu22-Arg182, with an C-terminal His
<b>Calculated MW</b>	19.5 kDa
<b>Observed MW</b>	19 kDa
<b>Accession</b>	Q9R1T0
<b>Bio-activity</b>	Not validated for activity

### Properties

<b>Purity</b>	> 95 % as determined by reducing SDS-PAGE.
<b>Endotoxin</b>	< 1.0 EU per µg of the protein as determined by the LAL method.
<b>Storage</b>	Generally, lyophilized proteins are stable for up to 12 months when stored at -20 to -80 °C. Reconstituted protein solution can be stored at 4-8°C for 2-7 days. Aliquots of reconstituted samples are stable at < -20°C for 3 months.
<b>Shipping</b>	This product is provided as lyophilized powder which is shipped with ice packs.
<b>Formulation</b>	Lyophilized from a 0.2 µm filtered solution of PBS, pH 7.4. Normally 5% - 8% trehalose, mannitol and 0.01% Tween 80 are added as protectants before lyophilization.
	Please refer to the specific buffer information in the printed manual.
<b>Reconstitution</b>	Please refer to the printed manual for detailed information.

### Data



> 95 % as determined by reducing SDS-PAGE.

### Background

Limitin, also called IFN- $\zeta$ , is a secreted interferon (IFN)-like glycoprotein. Limitin has approximately 30% sequence homology with IFN- $\alpha$ , IFN- $\beta$ , and IFN- $\omega$  and binds to the IFN- $\alpha/\beta$  receptors. Like IFN- $\alpha$  and IFN- $\beta$ , limitin has antiproliferative, immunomodulatory, and antiviral properties, it is unique in lacking influence on myeloid and erythroid progenitors. Similar dose requirement between limitin and IFN- $\alpha$  was observed for the enhancement of cytotoxic T lymphocyte activity, the augmentation of MHC class I expression, and the growth inhibition of a myelomonocytic leukemia cell line.

### For Research Use Only