

ENO1 Polyclonal Antibody

catalog number: E-AB-11010

Note: Centrifuge before opening to ensure complete recovery of vial contents.

Description

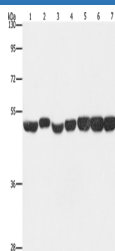
Reactivity	Human;Mouse;Rat
Immunogen	Recombinant protein of human ENO1
Host	Rabbit
Isotype	IgG
Purification	Affinity purification
Conjugation	Unconjugated
Buffer	Phosphate buffered solution, pH 7.4, containing 0.05% stabilizer and 50% glycerol.

Applications

Recommended Dilution

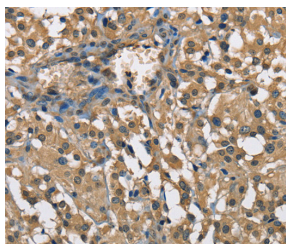
WB	1:500-1:2000
IHC	1:50-1:200

Data

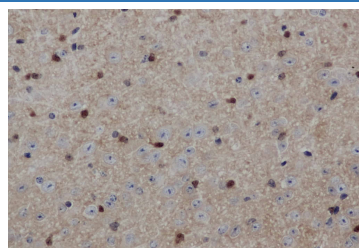


Western Blot analysis of Hela, A431 and hepG2 cell, Mouse brain and liver tissue, Mouse pancreas and Human fetal brain tissue using ENO1 Polyclonal Antibody at dilution of 1:700

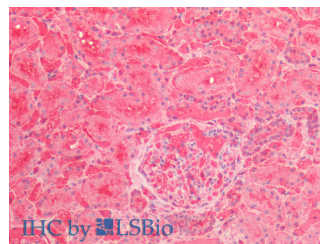
Calculated-MW:47 kDa



Immunohistochemistry of paraffin-embedded Human thyroid cancer using ENO1 Polyclonal Antibody at dilution of 1:60



Immunohistochemistry of paraffin-embedded Mouse brain using ENO1 Polyclonal Antibody at dilution of 1:50



Immunohistochemistry of paraffin-embedded Human Kidney using ENO1 Polyclonal Antibody at dilution of 1:60 (Elabscience Product Detected by Lifespan).

Preparation & Storage

Storage	Store at -20°C Valid for 12 months. Avoid freeze / thaw cycles.
Shipping	The product is shipped with ice pack, upon receipt, store it immediately at the temperature recommended.

Background

For Research Use Only

Tel: 400-999-2100

Web: www.elabscience.cn

Email: techsupport@elabscience.cn

Rev. V2.1

This gene encodes alpha-enolase, one of three enolase isoenzymes found in mammals. Each isoenzyme is a homodimer composed of 2 alpha, 2 gamma, or 2 beta subunits, and functions as a glycolytic enzyme. Alpha-enolase in addition, functions as a structural lens protein (tau-crystallin) in the monomeric form. Alternative splicing of this gene results in a shorter isoform that has been shown to bind to the c-myc promoter and function as a tumor suppressor. Several pseudogenes have been identified, including one on the long arm of chromosome 1. Alpha-enolase has also been identified as an autoantigen in Hashimoto encephalopathy.