

Recombinant Human MCM5 protein (His Tag)

Catalog Number: PDEH101040

Note: Centrifuge before opening to ensure complete recovery of vial contents.

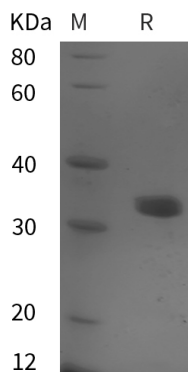
Description

Species	Human
Source	E.coli-derived Human MCM5 protein Met1-Asp200, with an N-terminal His & C-terminal His
Calculated MW	21.9 kDa
Observed MW	35 kDa
Accession	P33992-1
Bio-activity	Not validated for activity

Properties

Purity	> 95% as determined by reducing SDS-PAGE.
Endotoxin	< 10 EU/mg of the protein as determined by the LAL method
Storage	Generally, lyophilized proteins are stable for up to 12 months when stored at -20 to -80 °C. Reconstituted protein solution can be stored at 4-8°C for 2-7 days. Aliquots of reconstituted samples are stable at < -20°C for 3 months.
Shipping	This product is provided as lyophilized powder which is shipped with ice packs.
Formulation	Lyophilized from a 0.2 µm filtered solution in PBS with 5% Trehalose and 5% Mannitol.
Reconstitution	It is recommended that sterile water be added to the vial to prepare a stock solution of 0.5 mg/mL. Concentration is measured by UV-Vis.

Data



> 95 % as determined by reducing SDS-PAGE.

Background

MCM5 (Mini Chromosome Maintenance protein-5) is involved in the control of DNA replication. MCM proteins have DNA dependent ATPase motifs in their central domain which is conserved from yeast to mammals. MCM proteins form a complex which exhibits ATPase and helicase activities. In G0 phase levels of MCM 2 and 5 are lower than that of MCM7 and 3 but increase as the cell enters G1/S phase of the cell cycle. It has been reported that immunocytochemical assessment of Mcm5 expression may be of value in improving the accuracy of cervical smear testing for the detection of malignancy.

For Research Use Only