

# Elab Fluor<sup>®</sup> 647-conjugated beta actin Monoclonal Antibody

catalog number: AN00295M



**Note:** Centrifuge before opening to ensure complete recovery of vial contents.

## Description

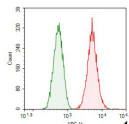
<b>Reactivity</b>	Rat
<b>Immunogen</b>	Recombinant human Beta actin protein by E. Coli
<b>Host</b>	Mouse
<b>Isotype</b>	IgG1
<b>Clone</b>	3A9
<b>Purification</b>	Protein A/G Purification
<b>Conjugation</b>	Elab Fluor <sup>®</sup> 647(Ex/Em:650nm/665nm)
<b>buffer</b>	PBS with 0.05% proclin 300, 1% protective protein and 50% glycerol,pH7.4

## Applications

## Recommended Dilution

<b>FCM</b>	0.2 µg per 10 <sup>6</sup> cells in a 100 µL suspension
------------	---

## Data



1X10<sup>6</sup> C6 cells were intracellularly stained with 0.2 ug Elab

Fluor<sup>®</sup> 647-conjugated beta actin Monoclonal Antibody (red), or 0.2 ug Elab Fluor<sup>®</sup> 647-conjugated beta actin Monoclonal Antibody Isotype Control (green).

## Preparation & Storage

<b>Storage</b>	Store at -20°C Valid for 12 months. Avoid freeze / thaw cycles. Protected from prolonged exposure to light.
<b>Shipping</b>	The product is shipped with ice pack,upon receipt,store it immediately at the temperature recommended.

## Background

Beta-actin (ACTB/ACTB) is one of six different actin isoforms in humans. Actins are highly conserved proteins that are involved in cell motility,structure and integrity. Beta actin is a major constituent of the contractile apparatus and one of the two nonmuscle cytoskeletal actins. Beta-actin gene is stably and constitutively expressed at high levels in most tissues and cells,and commonly used as a loading control for western blot and as a control for qPCR.

## For Research Use Only

A Reliable Research Partner in Life Science and Medicine  
Tel: 400-999-2100

Email:[techsupport@elabscience.cn](mailto:techsupport@elabscience.cn)

Web:[www.elabscience.cn](http://www.elabscience.cn)

Rev. V1.7