

OTULIN Polyclonal Antibody

catalog number: E-AB-92264

Note: Centrifuge before opening to ensure complete recovery of vial contents.

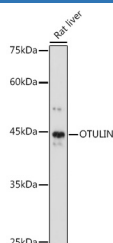
Description

Reactivity	Human;Mouse;Rat
Immunogen	Recombinant fusion protein of human OTULIN
Host	Rabbit
Isotype	IgG
Purification	Affinity purification
Buffer	Phosphate buffered solution, pH 7.4, containing 0.05% stabilizer and 50% glycerol.

Applications

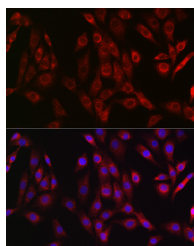
WB	1:500-1:2000
IF	1:50-1:200

Data

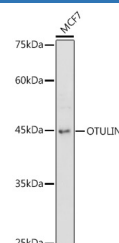


Western blot analysis of extracts of Rat liver using OTULIN Polyclonal Antibody at 1:1000 dilution.

Observed-MV:45 kDa
Calculated-MV:40 kDa



Immunofluorescence analysis of NIH/3T3 cells using OTULIN Polyclonal Antibody at dilution of 1:50 (40x lens).
Blue: DAPI for nuclear staining.



Western blot analysis of extracts of MCF7 cells using OTULIN Polyclonal Antibody at 1:1000 dilution.

Observed-MV:45 kDa
Calculated-MV:40 kDa

Preparation & Storage

Storage	Store at -20°C Valid for 12 months. Avoid freeze / thaw cycles.
Shipping	The product is shipped with ice pack, upon receipt, store it immediately at the temperature recommended.

Background

For Research Use Only

This gene encodes a member of the peptidase C65 family of ubiquitin isopeptidases. Members of this family remove ubiquitin from proteins. The encoded enzyme specifically recognizes and removes M1(Met1)-linked, or linear, ubiquitin chains from protein substrates. Linear ubiquitin chains are known to regulate the NF-kappa B signaling pathway in the context of immunity and inflammation. Mutations in this gene cause a potentially fatal autoinflammatory syndrome in human patients.

For Research Use Only

Toll-free: 1-888-852-8623
Web: www.elabscience.com

Tel: 1-832-243-6086
Email: techsupport@elabscience.com

Fax: 1-832-243-6017

Rev. V1.6