

Cytochrome c Polyclonal Antibody

catalog number: E-AB-68300

Note: Centrifuge before opening to ensure complete recovery of vial contents.

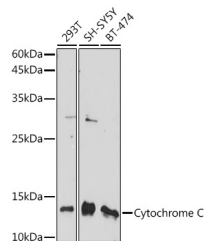
Description

Reactivity	Human;Mouse;Rat
Immunogen	Recombinant fusion protein of human Cytochrome c
Host	Rabbit
Isotype	IgG
Purification	Affinity purification
Buffer	Phosphate buffered solution, pH 7.4, containing 0.05% stabilizer and 50% glycerol.

Applications Recommended Dilution

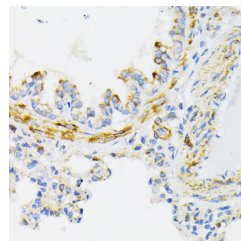
WB	1:500-1:2000
IHC	1:50-1:200

Data

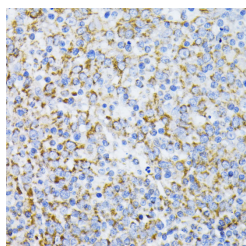


Western blot analysis of extracts of various cell lines using Cytochrome C Polyclonal Antibody at 1:1000 dilution.

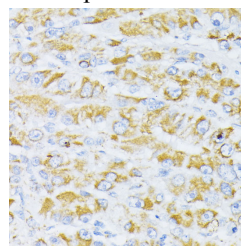
Observed-MW:11 kDa
Calculated-MW:11 kDa



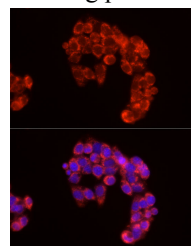
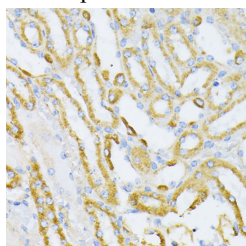
Immunohistochemistry of paraffin-embedded rat lung using Cytochrome C Polyclonal Antibody at dilution of 1:100 (40x lens). Perform microwave antigen retrieval with 10 mM PBS buffer pH 7.2 before commencing with IHC staining protocol.



Immunohistochemistry of paraffin-embedded human tonsil using Cytochrome C Polyclonal antibody at dilution of 1:100 (40x lens). Perform microwave antigen retrieval with 10 mM PBS buffer pH 7.2 before commencing with IHC staining protocol.

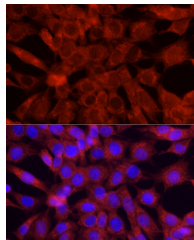


Immunohistochemistry of paraffin-embedded human liver cancer using Cytochrome C Polyclonal antibody at dilution of 1:100 (40x lens). Perform microwave antigen retrieval with 10 mM PBS buffer pH 7.2 before commencing with IHC staining protocol.



For Research Use Only

Immunohistochemistry of paraffin-embedded mouse kidney using Cytochrome C Polyclonal antibody at dilution of 1:100 (40x lens). Perform microwave antigen retrieval with 10 mM PBS buffer pH 7.2 before commencing with IHC staining protocol.



Immunofluorescence analysis of HepG2 cells using Cytochrome C Polyclonal antibody at dilution of 1:50 (40x lens). Blue: DAPI for nuclear staining.

Immunofluorescence analysis of NIH/3T3 cells using Cytochrome C Polyclonal antibody at dilution of 1:50 (40x lens). Blue: DAPI for nuclear staining.

Preparation & Storage

Storage

Store at -20°C Valid for 12 months. Avoid freeze / thaw cycles.

Shipping

The product is shipped with ice pack, upon receipt, store it immediately at the temperature recommended.

Background

This gene encodes a small heme protein that functions as a central component of the electron transport chain in mitochondria. The encoded protein associates with the inner membrane of the mitochondrion where it accepts electrons from cytochrome b and transfers them to the cytochrome oxidase complex. This protein is also involved in initiation of apoptosis. Mutations in this gene are associated with autosomal dominant nonsyndromic thrombocytopenia. Numerous processed pseudogenes of this gene are found throughout the human genome.

For Research Use Only