

## Recombinant Bcl2 Monoclonal Antibody

catalog number: **E-AB-81425**

**Note:** Centrifuge before opening to ensure complete recovery of vial contents.

### Description

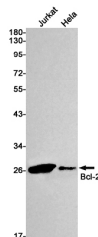
<b>Reactivity</b>	Human
<b>Immunogen</b>	A synthetic peptide of human Bcl-2
<b>Host</b>	Rabbit
<b>Isotype</b>	IgG
<b>Clone</b>	R03-9E1
<b>Purification</b>	Affinity Purified
<b>Buffer</b>	50mM Tris-Glycine(pH 7.4), 0.15M NaCl, 40% Glycerol, 0.05% stabilizer and 0.05% protective protein.

### Applications

### Recommended Dilution

<b>WB</b>	1:500-1:1000
<b>IHC</b>	1:20-1:200

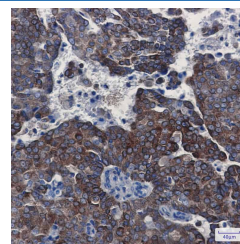
### Data



Western blot detection of Bcl-2 in Jurkat, Hela cell lysates using Bcl-2 Rabbit mAb (1:1000 diluted). Predicted band size: 26 kDa. Observed band size: 26 kDa.

**Observed-MW: 26 kDa**

**Calculated-MW: 26 kDa**



Immunohistochemistry of Bcl-2 in paraffin-embedded Human breast cancer tissue using Bcl-2 Rabbit mAb at dilution 1:100

### Preparation & Storage

<b>Storage</b>	Store at -20°C Valid for 12 months. Avoid freeze / thaw cycles.
<b>Shipping</b>	The product is shipped with ice pack, upon receipt, store it immediately at the temperature recommended.

### Background

BCL2 belongs to the Bcl-2 family. It suppresses apoptosis in a variety of cell systems including factor-dependent lymphohematopoietic and neural cells. BCL2 regulates cell death by controlling the mitochondrial membrane permeability. It appears to function in a feedback loop system with caspases. BCL2 inhibits caspase activity either by preventing the release of cytochrome c from the mitochondria and/or by binding to the apoptosis-activating factor (APAF-1).

### For Research Use Only