

## GRPEL2 Polyclonal Antibody

**catalog number: E-AB-62573**

**Note:** *Centrifuge before opening to ensure complete recovery of vial contents.*

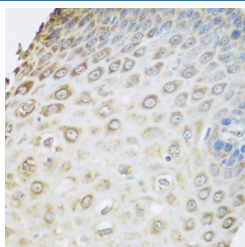
### Description

<b>Reactivity</b>	Human;Mouse;Rat
<b>Immunogen</b>	Recombinant fusion protein of human GRPEL2 (NP_689620.2).
<b>Host</b>	Rabbit
<b>Isotype</b>	IgG
<b>Purification</b>	Affinity purification
<b>Buffer</b>	Phosphate buffered solution, pH 7.4, containing 0.05% stabilizer and 50% glycerol.

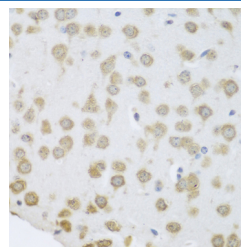
### Applications Recommended Dilution

<b>IHC</b>	1:50-1:100
------------	------------

### Data



Immunohistochemistry of paraffin-embedded Human esophagus using GRPEL2 Polyclonal Antibody at dilution of 1:100 (40x lens).



Immunohistochemistry of paraffin-embedded Mouse brain using GRPEL2 Polyclonal Antibody at dilution of 1:100 (40x lens).

### Preparation & Storage

<b>Storage</b>	Store at -20°C Valid for 12 months. Avoid freeze / thaw cycles.
<b>Shipping</b>	The product is shipped with ice pack, upon receipt, store it immediately at the temperature recommended.

### Background

GRPEL2 (GrpE Like 2, Mitochondrial) is a Protein Coding gene. Diseases associated with GRPEL2 include Freemartinism and Cofas Syndrome. Among its related pathways are Metabolism of proteins and Mitochondrial protein import. Gene Ontology (GO) annotations related to this gene include protein homodimerization activity and chaperone binding. An important paralog of this gene is GRPEL1.

### For Research Use Only