

## Angiopoietin-like Protein Polyclonal Antibody(Capture/Detector)

**catalog number: AN000910P**

**Note:** Centrifuge before opening to ensure complete recovery of vial contents.

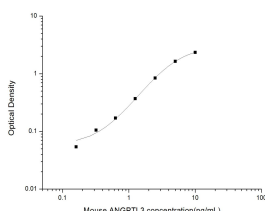
### Description

<b>Reactivity</b>	Mouse
<b>Immunogen</b>	Recombinant Mouse Angiopoietin-like Protein protein expressed by Mammalian
<b>Host</b>	Rabbit
<b>Isotype</b>	Rabbit IgG
<b>Purification</b>	Antigen Affinity Purification
<b>Buffer</b>	Phosphate buffered solution, pH 7.2, containing 0.05% Proclin300.

### Applications Recommended Dilution

<b>ELISA Capture</b>	2-8 µg/mL
<b>ELISA Detector</b>	0.1-0.4 µg/mL

### Data



Sandwich ELISA-Recombinant Mouse Angiopoietin-like proteinprotein standard curve.Background subtracted standard curve using Angiopoietin-like Protein antibody(AN000910P)(Capture),Angiopoietin-like Protein antibody(AN000910P)(Detector) in sandwich ELISA.The reference range value for Recombinant Mouse Angiopoietin-like proteinprotein is 0.16-10 ng/mL.

### Preparation & Storage

<b>Storage</b>	Store at 4°C valid for 12 months or -20°C valid for long term storage, avoid freeze / thaw cycles.
<b>Shipping</b>	The product is shipped with ice pack, upon receipt, store it immediately at the temperature recommended.

### Background

This gene encodes a member of a family of secreted proteins that function in angiogenesis. The encoded protein, which is expressed predominantly in the liver, is further processed into an N-terminal coiled-coil domain-containing chain and a C-terminal fibrinogen chain. The N-terminal chain is important for lipid metabolism, while the C-terminal chain may be involved in angiogenesis. Mutations in this gene cause familial hypobetalipoproteinemia type 2.

### For Research Use Only