

## Recombinant Mouse CD34 Protein (His Tag)

**Catalog Number:** PKSM040592

**Note:** Centrifuge before opening to ensure complete recovery of vial contents.

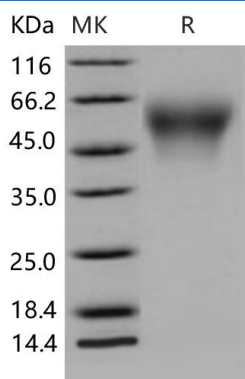
### Description

<b>Species</b>	Mouse
<b>Source</b>	HEK293 Cells-derived Mouse CD34 protein Met 1-Thr 287, with an C-terminal His
<b>Mol_Mass</b>	28.6 kDa
<b>Accession</b>	NP_001104529.1
<b>Bio-activity</b>	Measured by the ability of the immobilized protein to support the adhesion of the HUVEC human umbilical vein endothelial cell line. When $4 \times 10^4$ cells/well are added to mouse CD34 coated plates (0.8 µg/ml, 100 µl/well), approximately > 30 % will adhere after one hour at 37 °C.

### Properties

<b>Purity</b>	> 98 % as determined by reducing SDS-PAGE.
<b>Endotoxin</b>	< 1.0 EU per µg of the protein as determined by the LAL method.
<b>Storage</b>	Generally, lyophilized proteins are stable for up to 12 months when stored at -20 to -80 °C. Reconstituted protein solution can be stored at 4-8°C for 2-7 days. Aliquots of reconstituted samples are stable at < -20°C for 3 months.
<b>Shipping</b>	This product is provided as lyophilized powder which is shipped with ice packs.
<b>Formulation</b>	Lyophilized from sterile PBS, pH 7.4 Normally 5% - 8% trehalose, mannitol and 0.01% Tween 80 are added as protectants before lyophilization. Please refer to the specific buffer information in the printed manual.
<b>Reconstitution</b>	Please refer to the printed manual for detailed information.

### Data



> 98 % as determined by reducing SDS-PAGE.

### Background

Cluster of Differentiation 34 (CD34) is a member of a family of single-pass transmembrane sialomucin proteins, and may function as a cell-cell adhesion factor. CD34 protein is selectively expressed on hematopoietic progenitor cells and the small vessel endothelium of a variety of tissues. It has been widely used as a stem and progenitor cell marker, and clinical CD34+ stem cell transplantation (CD34+SCT) has been performed for tumor purging. CD34 monoclonal antibodies are widely used to identify and isolate hemopoietic progenitors and to classify acute and chronic leukemias.

### For Research Use Only