

## Recombinant Laminin beta 1 Monoclonal Antibody

catalog number: **AN301833L**

**Note:** Centrifuge before opening to ensure complete recovery of vial contents.

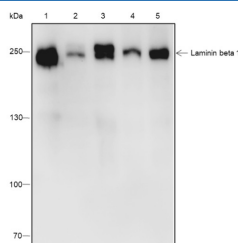
### Description

<b>Reactivity</b>	Human;Rat;Mouse
<b>Immunogen</b>	Recombinant human Laminin beta 1 fragment
<b>Host</b>	Rabbit
<b>Isotype</b>	IgG, $\kappa$
<b>Clone</b>	A545
<b>Purification</b>	Protein A purified
<b>Buffer</b>	PBS, 50% glycerol, 0.05% Proclin 300, 0.05% protein protectant.

### Applications Recommended Dilution

<b>WB</b>	1:1000-1:5000
-----------	---------------

### Data



Western Blot with Laminin beta 1 Monoclonal Antibody at dilution of 1:5000. Lane 1: JAR, Lane 2: HeLa, Lane 3: HepG2, Lane 4: Mouse stomach, Lane 5: Rat stomach

**Observed-MW:250 kDa**  
**Calculated-MW:198 kDa**

### Preparation & Storage

<b>Storage</b>	Store at -20°C Valid for 12 months. Avoid freeze / thaw cycles.
<b>Shipping</b>	Ice bag

### Background

Laminins are a family of basement membrane glycoproteins composed of three nonidentical chains, laminin alpha, beta and gamma (formerly A, B1, and B2, respectively) (PMID: 7959779). Laminins contribute to the structure of extracellular matrix and influence the behavior of associated cells, such as adhesion, differentiation, migration, phenotype stability, and resistance to anoikis (PMID: 23057746). Laminin beta 1 (LAMB1) is expressed in most tissues that produce basement membranes, and is one of the 3 chains constituting laminin-1, the first laminin isolated from Engelbreth-Holm-Swarm (EHS) tumor.

### For Research Use Only