

CHMP6 Polyclonal Antibody

catalog number: **E-AB-92624**

Note: Centrifuge before opening to ensure complete recovery of vial contents.

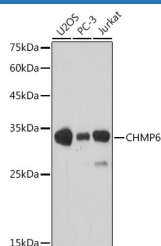
Description

Reactivity	Human;Mouse
Immunogen	Recombinant fusion protein of human CHMP6
Host	Rabbit
Isotype	IgG
Purification	Affinity purification
Buffer	Phosphate buffered solution, pH 7.4, containing 0.05% stabilizer and 50% glycerol.

Applications

Applications	Recommended Dilution
WB	1:500-1:1000
IF	1:50-1:200

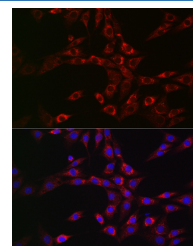
Data



Western blot analysis of extracts of various cell lines using CHMP6 Polyclonal Antibody at 1:1000 dilution.

Observed-MW:30 kDa

Calculated-MW:23 kDa



Immunofluorescence analysis of NIH/3T3 cells using CHMP6 Polyclonal Antibody at dilution of 1:100 (40x lens).

Blue: DAPI for nuclear staining.

Preparation & Storage

Storage	Store at -20°C Valid for 12 months. Avoid freeze / thaw cycles.
Shipping	The product is shipped with ice pack, upon receipt, store it immediately at the temperature recommended.

Background

This gene encodes a member of the chromatin-modifying protein/charged multivesicular body protein family. Proteins in this family are part of the ESCRT-III (endosomal sorting complex required for transport III) which degrades surface receptors, and in biosynthesis of endosomes.

For Research Use Only