

PTPN20 Polyclonal Antibody

catalog number: E-AB-16739

Note: Centrifuge before opening to ensure complete recovery of vial contents.

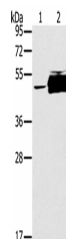
Description

Reactivity	Human
Immunogen	Synthetic peptide of human PTPN20B
Host	Rabbit
Isotype	IgG
Purification	Affinity purification
Buffer	Phosphate buffered solution, pH 7.4, containing 0.05% stabilizer and 50% glycerol.

Applications

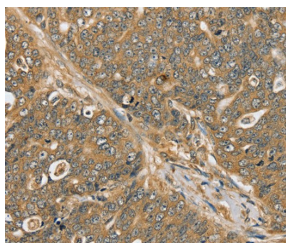
Applications	Recommended Dilution
WB	1:500-1:2000
IHC	1:50-1:300

Data

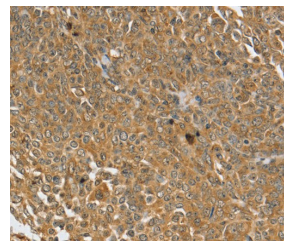


Western Blot analysis of K562 cell and Human testis tissue using PTPN20 Polyclonal Antibody at dilution of 1:200

Calculated-MW:48 kDa



Immunohistochemistry of paraffin-embedded Human ovarian cancer using PTPN20 Polyclonal Antibody at dilution of 1:30



Immunohistochemistry of paraffin-embedded Human cervical cancer using PTPN20 Polyclonal Antibody at dilution of 1:30

Preparation & Storage

Storage	Store at -20°C Valid for 12 months. Avoid freeze / thaw cycles.
Shipping	The product is shipped with ice pack, upon receipt, store it immediately at the temperature recommended.

Background

The product of this gene belongs to the family of classical tyrosine-specific protein tyrosine phosphatases. Many protein tyrosine phosphatases have been shown to regulate fundamental cellular processes. The encoded protein appears to be targeted to sites of actin polymerization. A pseudogene of this gene has been defined on chromosome 10. Alternative splicing results in multiple transcript variants.

For Research Use Only