

MAP7D1 Polyclonal Antibody

catalog number: **E-AB-91319**

Note: Centrifuge before opening to ensure complete recovery of vial contents.

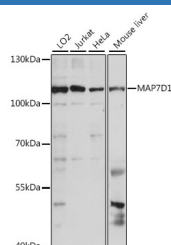
Description

Reactivity	Human;Mouse
Immunogen	Recombinant fusion protein of human MAP7D1
Host	Rabbit
Isotype	IgG
Purification	Affinity purification
Buffer	Phosphate buffered solution, pH 7.4, containing 0.05% stabilizer and 50% glycerol.

Applications Recommended Dilution

WB	1:500-1:2000
-----------	--------------

Data



Western blot analysis of extracts of various cell lines using
MAP7D1 Polyclonal Antibody at 1:1000 dilution.

Observed-MW:110 kDa

Calculated-MW:42 kDa/88 kDa/89 kDa/92 kDa

Preparation & Storage

Storage	Store at -20°C Valid for 12 months. Avoid freeze / thaw cycles.
Shipping	The product is shipped with ice pack, upon receipt, store it immediately at the temperature recommended.

Background

Predicted to be involved in microtubule cytoskeleton organization. Located in cytosol and microtubule cytoskeleton.

For Research Use Only