

## Elab Fluor® Violet 450 Anti-Mouse CD8a Antibody[YTS169.4]

Catalog Number: AN00408Q

**Note:** Centrifuge before opening to ensure complete recovery of vial contents.

### Description

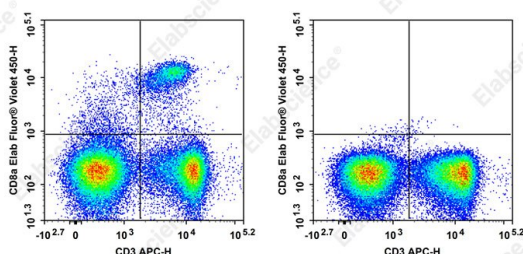
Reactivity	Mouse
Host	Rat
Isotype	Rat IgG2b, $\lambda$
Clone No.	YTS169.4
Isotype Control	Elab Fluor® Violet 450 Rat IgG2b, $\lambda$ Isotype Control[G013B8] [Product AN00565Q]
Conjugation	Elab Fluor® Violet 450
Conjugation Information	Elab Fluor® Violet 450 is designed to be excited by the violet laser (405 nm) and detected using an optical filter centered near 450 nm (e.g., a 450/45 nm bandpass filter).
Storage Buffer	Phosphate buffered solution, pH 7.2, containing 0.09% stabilizer and 1% protein protectant.

### Applications

### Recommended usage

FCM	Each lot of this antibody is quality control tested by flow cytometric analysis. <b>The amount of the reagent is suggested to be used 5 <math>\mu</math>L of antibody per test (million cells in 100 <math>\mu</math>L staining volume or per 100 <math>\mu</math>L of whole blood).</b> Please check your vial before the experiment. Since applications vary, the appropriate dilutions must be determined for individual use.
-----	--

### Data



C57BL/6 mouse splenocytes were stained with CD3 APC and CD8 (clone YTS169.4)Elab Fluor® Violet 450 (left) or IgG2b,  $\lambda$  Elab Fluor® Violet 450 isotype control (right).

### Preparation & Storage

Storage	Keep as concentrated solution. This product can be stored at 2-8°C for 12 months. Please protected from prolonged exposure to light and do not freeze.
Shipping	Ice bag

### Antigen Information

Alternate Names	T8;Lyt2;Ly-2;T-cell surface glycoprotein Lyt-2;CD8a;CD8;AN00408
Uniprot ID	P01731
Gene ID	12525

### For Research Use Only

## Background

CD8, also known as Lyt-2, Ly-2, or T8, consists of disulfide-linked  $\alpha$  and  $\beta$  chains that form the  $\alpha$ (CD8a)/ $\beta$ (CD8b) heterodimer and  $\alpha/\alpha$  homodimer. CD8a is a 34 kD protein that belongs to the immunoglobulin family. The CD8  $\alpha/\beta$  heterodimer is expressed on the surface of most thymocytes and a subset of mature TCR  $\alpha/\beta$  T cells. CD8 expression on mature T cells is non-overlapping with CD4. The CD8  $\alpha/\alpha$  homodimer is expressed on a subset of  $\gamma/\delta$  TCR-bearing T cells, NK cells, intestinal intraepithelial lymphocytes, and lymphoid dendritic cells. CD8 is an antigen co-receptor on T cells that interacts with MHC class I on antigen-presenting cells or epithelial cells. CD8 promotes T cell activation through its association with the TCR complex and protein tyrosine kinase lck.