

Recombinant Human PMM2 Protein (His Tag)

Catalog Number: PKSH032894

Note: Centrifuge before opening to ensure complete recovery of vial contents.

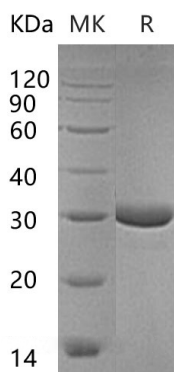
Description

Species	Human
Source	E.coli-derived Human PMM2 protein Met 1-Ser246, with an C-terminal His
Calculated MW	29.1 kDa
Observed MW	29 kDa
Accession	O15305
Bio-activity	Not validated for activity

Properties

Purity	> 95 % as determined by reducing SDS-PAGE.
Concentration	Subject to label value.
Endotoxin	< 1.0 EU per µg of the protein as determined by the LAL method.
Storage	Store at < -20°C, stable for 6 months. Please minimize freeze-thaw cycles.
Shipping	This product is provided as liquid. It is shipped at frozen temperature with blue ice/gel packs. Upon receipt, store it immediately at < - 20°C.
Formulation	Supplied as a 0.2 µm filtered solution of 20mM Tris-HCl, 150mM NaCl, pH 8.0.

Data



> 95 % as determined by reducing SDS-PAGE.

Background

Phosphomannomutase 2 (PMM2) is an enzyme that is a member of the highly variable methyltransferase superfamily. PMM2 is a cytoplasmic protein and catalyzes the isomerization of mannose 6-phosphate to mannose 1-phosphate. In addition, PMM2 is involved in the synthesis of the GDP-mannose and dolichol-phosphate-mannose that required for a number of critical mannosyl transfer reactions. Defects in PMM2 can result in congenital disorder of glycosylation type 1A (CDG1A). Congenital disorders of glycosylation are metabolic deficiencies in glycoprotein biosynthesis that usually cause severe mental and psychomotor retardation.