

# Recombinant Human IL6RA/CD126 protein (His Tag)

Catalog Number: PDMH100399



**Note:** Centrifuge before opening to ensure complete recovery of vial contents.

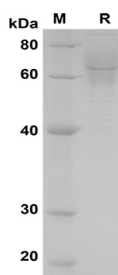
## Description

<b>Species</b>	Human
<b>Source</b>	HEK293 Cells-derived Human IL6RA protein Met1-Pro365, with an C-terminal His
<b>Mol_Mass</b>	40.0 kDa
<b>Accession</b>	P08887
<b>Bio-activity</b>	Not validated for activity

## Properties

<b>Purity</b>	> 85% as determined by reducing SDS-PAGE.
<b>Endotoxin</b>	< 1.0 EU/mg of the protein as determined by the LAL method
<b>Storage</b>	Generally, lyophilized proteins are stable for up to 12 months when stored at -20 to -80 °C. Reconstituted protein solution can be stored at 4-8°C for 2-7 days. Aliquots of reconstituted samples are stable at < -20°C for 3 months.
<b>Shipping</b>	This product is provided as lyophilized powder which is shipped with ice packs.
<b>Formulation</b>	Lyophilized from a 0.2 µm filtered solution in PBS with 5% Trehalose and 5% Mannitol.
<b>Reconstitution</b>	It is recommended that sterile water be added to the vial to prepare a stock solution of 0.5 mg/mL. Concentration is measured by UV-Vis.

## Data



SDS-PAGE analysis of Human IL6RA/CD126 proteins, 2µg/lane of Recombinant Human IL6RA/CD126 proteins was resolved with SDS-PAGE under reducing conditions, showing bands at 65 KD.

## Background

Interleukin 6 receptor (IL-6R) also known as CD126 (Cluster of Differentiation 126) is a type I cytokine receptor. The low concentration of a soluble form of IL-6 receptor (sIL-6R) acts as an agonist of IL-6 activity. In the IL-6R/CD126/IL6R system, both a membrane-bound IL-6R and a sIL-6R protein are able to mediate IL-6 signals into the cells through the interaction of gp130. The resulting IL-6/sIL-6R protein complex is also capable of binding to gp130 and inducing intracellular signalling. Through this so-called 'trans-signalling' mechanism, IL-6 is able to stimulate cells that lack an endogenous mL-6R. High levels of IL-6 and sIL-6R have been reported in several chronic inflammatory and autoimmune diseases as well as in cancer.

## For Research Use Only

A Reliable Research Partner in Life Science and Medicine  
Tel:400-999-2100

Email:[techsupport@elabscience.cn](mailto:techsupport@elabscience.cn)

Web:[www.elabscience.cn](http://www.elabscience.cn)

Rev. V1.3