

Elab Fluor® 700 Anti-Human CD50 Antibody[CBR-IC3/1]

Catalog Number: AN00318M1

Note: Centrifuge before opening to ensure complete recovery of vial contents.

Description

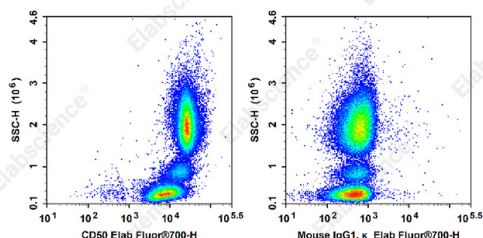
Reactivity	Human
Host	Mouse
Isotype	Mouse IgG1, κ
Clone No.	CBR-IC3/1
Isotype Control	Elab Fluor® 700 Mouse IgG1, κ Isotype Control[MOPC-21] [Product E-AB-F09792M1]
Conjugation	Elab Fluor® 700
Conjugation Information	Elab Fluor® 700 is designed to be excited by the Red laser (627-640 nm) and detected using an optical filter centered near 719 nm (e.g., a 725/40 nm bandpass filter).
Storage Buffer	Phosphate buffered solution, pH 7.2, containing 0.09% stabilizer.

Applications

Recommended usage

FCM	Each lot of this antibody is quality control tested by flow cytometric analysis. The amount of the reagent is suggested to be used 5 μL of antibody per test (million cells in 100 μL staining volume or per 100 μL of whole blood). Please check your vial before the experiment. Since applications vary, the appropriate dilutions must be determined for individual use.
------------	---

Data



Staining of normal human peripheral blood cells with Elab Fluor® 700 Anti-Human CD50 Antibody[CBR-IC3/1](left) or Elab Fluor® 700 Mouse IgG1, κ Isotype Control(right). Cells in the leucocyte gate were used for analysis.

Preparation & Storage

Storage	Keep as concentrated solution. This product can be stored at 2-8°C for 24 months. Please protected from prolonged exposure to light and do not freeze.
Shipping	Ice bag

Antigen Information

Alternate Names	ICAM-3
Uniprot ID	P32942
Gene ID	3385

For Research Use Only

Background

CD50 is a 120-140 kD type I membrane protein also known as intercellular adhesion molecule 3 (ICAM-3). It is broadly expressed on leukocytes, endothelial cells, and Langerhans cells. CD50 is a member of the Ig superfamily. It provides costimulatory signal for T cells and regulates cell adhesion through interaction with LFA-1 (CD11a/CD18, α L/ β 2) integrin.