

CAB39L Polyclonal Antibody

catalog number: E-AB-14809

Note: Centrifuge before opening to ensure complete recovery of vial contents.

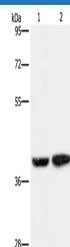
Description

Reactivity	Human;Mouse
Immunogen	Recombinant protein of human CAB39L
Host	Rabbit
Isotype	IgG
Purification	Affinity purification
Buffer	Phosphate buffered solution, pH 7.4, containing 0.05% stabilizer and 50% glycerol.

Applications

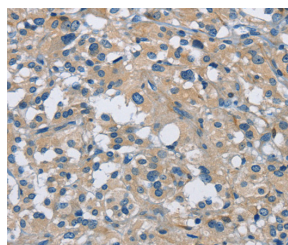
Applications	Recommended Dilution
WB	1:500-1:2000
IHC	1:25-1:100

Data



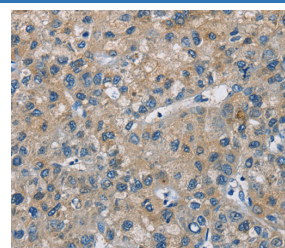
Western Blot analysis of Human fetal brain tissue and 231 cell using CAB39L Polyclonal Antibody at dilution of 1:350

Calculated-MV:39 kDa



Immunohistochemistry of paraffin-embedded Human thyroid cancer using CAB39L Polyclonal Antibody at dilution of

1:30



Immunohistochemistry of paraffin-embedded Human liver cancer using CAB39L Polyclonal Antibody at dilution of

1:30

Preparation & Storage

Storage	Store at -20°C Valid for 12 months. Avoid freeze / thaw cycles.
Shipping	The product is shipped with ice pack, upon receipt, store it immediately at the temperature recommended.

Background

Calcium-binding protein 39-like is a protein that in humans is encoded by the CAB39L gene. CAB39L (calcium binding protein 39-like), also known as MO25L (MO25-like) or MO2L, is a 337 amino acid protein that is similar to MO25 and is found in the serum of nearly half of all patients diagnosed with acute monocytic leukemia. This suggests a role for CAB39L in carcinogenesis.

For Research Use Only