

Recombinant Human CIB2/KIP-2 Protein (His Tag)

Catalog Number: PKSH030805

Note: Centrifuge before opening to ensure complete recovery of vial contents.

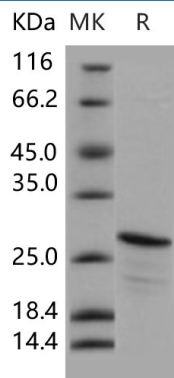
Description

Species	Human
Source	E.coli-derived Human CIB2/KIP-2 protein Met 1-Ile 187, with an N-terminal His
Calculated MW	23.1 kDa
Observed MW	27 kDa
Accession	O75838
Bio-activity	Not validated for activity

Properties

Purity	> 75 % as determined by reducing SDS-PAGE.
Endotoxin	Please contact us for more information.
Storage	Generally, lyophilized proteins are stable for up to 12 months when stored at -20 to -80 °C. Reconstituted protein solution can be stored at 4-8°C for 2-7 days. Aliquots of reconstituted samples are stable at < -20°C for 3 months.
Shipping	This product is provided as lyophilized powder which is shipped with ice packs.
Formulation	Lyophilized from sterile 50mM Tris, 20% glycerol, pH 8.0 Normally 5% - 8% trehalose, mannitol and 0.01% Tween 80 are added as protectants before lyophilization.
Reconstitution	Please refer to the specific buffer information in the printed manual.

Data



> 75 % as determined by reducing SDS-PAGE.

Background

For Research Use Only

Toll-free: 1-888-852-8623
Web: www.elabscience.com

Tel: 1-832-243-6086
Email: techsupport@elabscience.com

Fax: 1-832-243-6017

Rev. V3.6

Calcium and integrin-binding protein 2 (CIB2) belongs to a protein family with four known members, CIB1 through CIB4, which are characterized by multiple calcium-binding EF-hand domains. Sensorineural hearing loss is genetically heterogeneous. The mutations in CIB2, which encodes a calcium- and integrin-binding protein, are associated with nonsyndromic deafness (DFNB48) and Usher syndrome type 1J (USH1J). Furthermore, in zebrafish and *Drosophila melanogaster*, CIB2 is essential for the function and proper development of hair cells and retinal photoreceptor cells. We also show that CIB2 is a new member of the vertebrate Usher interactome. Variants in CIB2 can underlie either Usher syndrome type I (USH1J) or nonsyndromic hearing impairment (NSHI) (DFNB48). CIB2 is widely expressed in various human and animal tissues, mainly in skeletal muscle, nervous tissue, inner ear, and retina. The CIB2 protein is responsible for maintaining Ca(2+) homeostasis in cells and interacting with integrins-transmembrane receptors essential for cell adhesion, migration, and activation of signaling pathways. Calcium signaling pathway is crucial for signal transduction in the inner ear, and integrins regulate hair cell differentiation and maturation of the stereocilia.