

# Recombinant Mouse IL1A/IL-1A/IL-1F1 protein (His Tag)

Catalog Number: PDEM100275



**Note:** Centrifuge before opening to ensure complete recovery of vial contents.

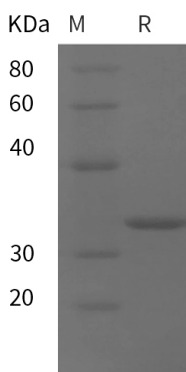
## Description

<b>Species</b>	Mouse
<b>Source</b>	E.coli-derived Mouse IL1A protein Met1-Ser270, with an C-terminal His
<b>Mol_Mass</b>	29.6 kDa
<b>Accession</b>	P01582
<b>Bio-activity</b>	Not validated for activity

## Properties

<b>Purity</b>	> 95% as determined by reducing SDS-PAGE.
<b>Endotoxin</b>	< 10 EU/mg of the protein as determined by the LAL method
<b>Storage</b>	Generally, lyophilized proteins are stable for up to 12 months when stored at -20 to -80 °C. Reconstituted protein solution can be stored at 4-8°C for 2-7 days. Aliquots of reconstituted samples are stable at < -20°C for 3 months.
<b>Shipping</b>	This product is provided as lyophilized powder which is shipped with ice packs.
<b>Formulation</b>	Lyophilized from a 0.2 µm filtered solution in PBS with 5% Trehalose and 5% Mannitol.
<b>Reconstitution</b>	It is recommended that sterile water be added to the vial to prepare a stock solution of 0.5 mg/mL. Concentration is measured by UV-Vis.

## Data



> 95 % as determined by reducing SDS-PAGE.

## Background

Mouse Interleukin-1 (IL-1) designates two proteins, IL-1 $\alpha$  and IL-1 $\beta$ , which are the products of distinct genes, but recognize the same cell surface receptors. IL-1 $\alpha$  and IL-1 $\beta$  are structurally related polypeptides that show approximately 25% homology at the amino acid level. Both proteins are produced by a wide variety of cells in response to stimuli such as those produced by inflammatory agents, infections, or microbial endotoxins. The proteins are synthesized as 31 kDa precursors that are subsequently cleaved into proteins with molecular weights of approximately 17.5 kDa.

## For Research Use Only