

Anti-SARS-CoV Spike S1 Monoclonal Antibody

catalog number: E-AB-V1350

Note: Centrifuge before opening to ensure complete recovery of vial contents.

Description

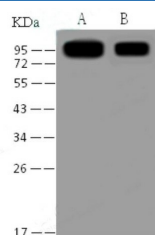
Reactivity	SARS
Immunogen	Recombinant SARS-CoV S1 Protein (His Tag) (Active)
Host	Mouse
Isotype	IgG2a
Clone	08
Purification	Protein A Affinity
Buffer	0.2 µm filtered solution in PBS.

Applications

Recommended Dilution

WB	1:1000-1:5000
ELISA	1:1000-1:2000

Data



Western Blot analysis of Recombinant SARS-CoV S1 Protein (His Tag)(PKSV030101 with 30ng and 5ng) using Anti-SARS-CoV Spike S1 Monoclonal Antibody at dilution of 1:1000.

Preparation & Storage

Storage	Store at -20°C Valid for 12 months. Avoid freeze / thaw cycles.
Shipping	The product is shipped with ice pack, upon receipt, store it immediately at the temperature recommended.

Background

The spike (S) glycoprotein of coronaviruses contains protrusions that will only bind to certain receptors on the host cell. Known receptors bind S1 are ACE2, angiotensin-converting enzyme 2; DPP4, dipeptidyl peptidase-4; APN, aminopeptidase N; CEACAM, carcinoembryonic antigen-related cell adhesion molecule 1; Sia, sialic acid; O-ac Sia, O-acetylated sialic acid. The spike is essential for both host specificity and viral infectivity. The term 'peplomer' is typically used to refer to a grouping of heterologous proteins on the virus surface that function together. The spike (S) glycoprotein of coronaviruses is known to be essential in the binding of the virus to the host cell at the advent of the infection process.

For Research Use Only