

PE/Elab Fluor® 594 Anti-Human/Mouse Integrin β7 Antibody[FIB21]

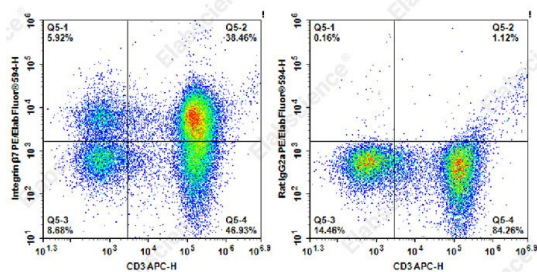
Catalog Number: AN00423P

Note: Centrifuge before opening to ensure complete recovery of vial contents.

Description	
Reactivity	Human;Mouse
Host	Rat
Isotype	Rat IgG2b, κ
Clone No.	FIB21
Isotype Control	PE/Elab Fluor® 594 Rat IgG2b, κ Isotype Control[LTF-2] [Product E-AB-F09842P]
Conjugation	PE/Elab Fluor® 594
Conjugation Information	PE/Elab Fluor® 594 is designed to be excited by the blue (488 nm), Green (532 nm) and yellow-green (561 nm) lasers and detected using an optical filter centered near 620 nm (e.g., a 610/20 nm bandpass filter).
Storage Buffer	Phosphate buffered solution, pH 7.2, containing 0.09% sodium azide and 1% BSA.

Applications	Recommended usage
FCM	Each lot of this antibody is quality control tested by flow cytometric analysis. The amount of the reagent is suggested to be used 5 μL of antibody per test (million cells in 100 μL staining volume or per 100 μL of whole blood). Please check your vial before the experiment. Since applications vary, the appropriate dilutions must be determined for individual use.

Data



Staining of normal human peripheral blood cells with APC Anti-Human CD3 Antibody and PE/Elab Fluor® 594 Anti-Human/Mouse integrin β7 Antibody[FIB21] (left) or PE/Elab Fluor® 594 Rat IgG2a Isotype Control (right). Cells in the lymphocytes gate were used for analysis.

Preparation & Storage	
Storage	Keep as concentrated solution. This product can be stored at 2-8°C for 12 months. Please protected from prolonged exposure to light and do not freeze.
Shipping	Ice bag

Antigen Information	
Alternate Names	β7 Integrin;integrin βp;ITGB7
Uniprot ID	P26010;P26011

For Research Use Only

Gene ID

3695;16421

Background

Integrin $\beta 7$ is a 130 kD glycoprotein also known as integrin βp . It is a member of the Ig superfamily. In association with integrin $\alpha 4$ or αE chain, $\beta 7$ forms $\alpha 4/\beta 7$ or $\alpha E/\beta 7$ heterodimer. $\alpha 4/\beta 7$ (CD49d/ $\beta 7$, LPAM-1) is expressed on the majority of peripheral lymphocytes, on small subsets of thymocytes, and bone marrow progenitors. LPAM-1 binds to several ligands, VCAM-1, MAdCAM-1 and fibronectin, and is involved in lymphocyte adhesion and some hematopoietic progenitor cells migration. $\alpha E/\beta 7$ (CD103/ $\beta 7$, $\alpha IEL/\beta 7$) is expressed on intestinal intraepithelial lymphocytes (IEL), dendritic epidermal T cells, T regulatory cells, a subset of CD8+ T cells in lymph nodes and lamina propria. CD103/ $\beta 7$ complex is thought to play a role in lymphocyte retention via interaction with its ligand E-Cadherin.