

Recombinant Human C-X-C Motif Chemokine 6/CXCL6 (C-6His)

Catalog Number: PKSH033901

Note: Centrifuge before opening to ensure complete recovery of vial contents.

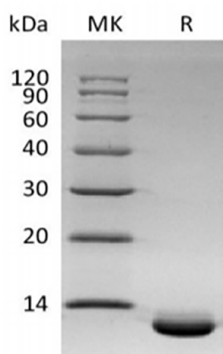
Description

Species	Human
Source	HEK293 Cells-derived Human C-X-C Motif Chemokine 6;CXCL6 protein Gly38-Asn114, with an C-terminal His
Calculated MW	9.4 kDa
Observed MW	13 kDa
Accession	P80162
Bio-activity	Not validated for activity

Properties

Purity	> 95 % as determined by reducing SDS-PAGE.
Endotoxin	< 1.0 EU per µg of the protein as determined by the LAL method.
Storage	Generally, lyophilized proteins are stable for up to 12 months when stored at -20 to -80°C. Reconstituted protein solution can be stored at 4-8°C for 2-7 days. Aliquots of reconstituted samples are stable at < -20°C for 3 months.
Shipping	This product is provided as lyophilized powder which is shipped with ice packs.
Formulation	Lyophilized from a 0.2 µm filtered solution of 20mM PB, 150mM NaCl, 5% Trehalose, 1mM EDTA, pH 7.4. Normally 5% - 8% trehalose, mannitol and 0.01% Tween 80 are added as protectants before lyophilization. Please refer to the specific buffer information in the printed manual.
Reconstitution	Please refer to the printed manual for detailed information.

Data



> 95 % as determined by reducing SDS-PAGE.

Background

Chemokine (C-X-C-Motif) Ligand 6 (CXCL6) is a small cytokine belonging to the CXC chemokine family. It is a potent neutrophil chemotactic and activating factor and it exhibits extensive similarity to other CXC chemokines such as IL-8 and ENA-78. CXCL6 can promote the release of MMP-9 from granulocytes indicating its potential role as an inflammatory mediator. It functionally uses both of the IL-8/CXCL8 receptors to chemoattract neutrophils but that is structurally most related to epithelial cell-derived neutrophil attractant-78 (ENA-78)/CXCL5. The human CXCL6 gene has been cloned and is physically mapped to the CXC chemokine locus on chromosome 4. Mature human CXCL6 is a 75 amino acid (aa) protein with a predicted molecular weight of approximately 8 kDa. Human CXCL6 shares 60% and 67% aa identity with mouse and bovine CXCL6, respectively.

For Research Use Only

Toll-free: 1-888-852-8623
Web: www.elabscience.com

Tel: 1-832-243-6086
Email: techsupport@elabscience.com

Fax: 1-832-243-6017