

Recombinant Calpain small subunit 1 Monoclonal Antibody

catalog number: **AN301453L**

Note: Centrifuge before opening to ensure complete recovery of vial contents.

Description

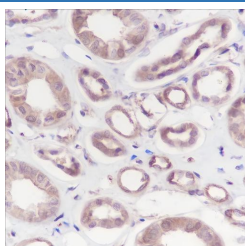
Reactivity	Human;
Immunogen	Recombinant human Calpain small subunit 1 fragment
Host	Rabbit
Isotype	IgG, κ
Clone	A148
Purification	Protein A purified
Buffer	PBS, 50% glycerol, 0.05% Proclin 300, 0.05% protein protectant.

Applications

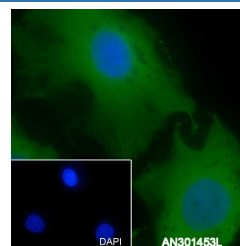
Recommended Dilution

IHC	1:200-1:1000
IF	1:50
FCM	1:50-1:100

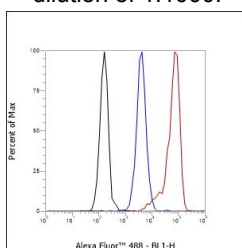
Data



Immunohistochemistry of paraffin-embedded Human kidney using Calpain small subunit 1 Monoclonal Antibody at dilution of 1:1000.



Immunofluorescent analysis of (4% Paraformaldehyde) fixed HeLa cells using anti-Calpain small subunit 1 Monoclonal Antibody at dilution of 1:50.



Flow cytometric analysis of human Calpain small subunit 1 expression on HeLa cells. Cells were stained with purified anti-Human Calpain small subunit 1, then a Alexa Fluor 488-conjugated second step antibody. The histogram were derived from events with the forward and side light-scatter characteristics of intact cells.

Preparation & Storage

Storage	Store at -20°C Valid for 12 months. Avoid freeze / thaw cycles.
Shipping	Ice bag

Background

Regulatory subunit of the calcium-regulated non-lysosomal thiol-protease which catalyzes limited proteolysis of substrates involved in cytoskeletal remodeling and signal transduction.

For Research Use Only