

MRPL28 Polyclonal Antibody

catalog number: E-AB-61172

Note: Centrifuge before opening to ensure complete recovery of vial contents.

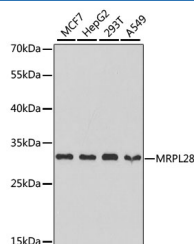
Description

Reactivity	Human; Rat
Immunogen	Recombinant fusion protein of human MRPL28 (NP_006419.2).
Host	Rabbit
Isotype	IgG
Purification	Affinity purification
Buffer	Phosphate buffered solution, pH 7.4, containing 0.05% stabilizer and 50% glycerol.

Applications

Applications	Recommended Dilution
WB	1:500-1:2000
IHC	1:50-1:200
IF	1:50-1:100

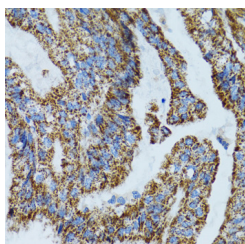
Data



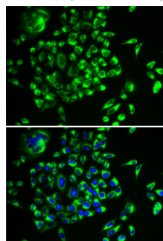
Western blot analysis of extracts of various cell lines using MRPL28 Polyclonal Antibody at dilution of 1:1000.

Observed-MW:30 kDa

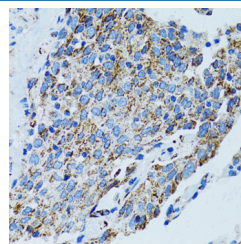
Calculated-MW:30 kDa



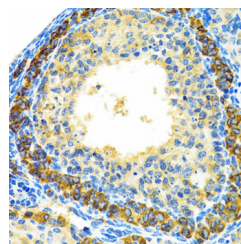
Immunohistochemistry of paraffin-embedded Human gastric cancer using MRPL28 Polyclonal Antibody at dilution of 1:100 (40x lens).



Immunofluorescence analysis of U2OS cells using MRPL28 Polyclonal Antibody



Immunohistochemistry of paraffin-embedded Human lung cancer using MRPL28 Polyclonal Antibody at dilution of 1:100 (40x lens).



Immunohistochemistry of paraffin-embedded Rat ovary using MRPL28 Polyclonal Antibody at dilution of 1:100 (40x lens).

For Research Use Only

Preparation & Storage

Storage

Store at -20°C Valid for 12 months. Avoid freeze / thaw cycles.

Shipping

The product is shipped with ice pack, upon receipt, store it immediately at the temperature recommended.

Background

Mammalian mitochondrial ribosomal proteins are encoded by nuclear genes and help in protein synthesis within the mitochondrion. Mitochondrial ribosomes (mitoribosomes) consist of a small 28S subunit and a large 39S subunit. They have an estimated 75% protein to rRNA composition compared to prokaryotic ribosomes, where this ratio is reversed. Another difference between mammalian mitoribosomes and prokaryotic ribosomes is that the latter contain a 5S rRNA. Among different species, the proteins comprising the mitoribosome differ greatly in sequence, and sometimes in biochemical properties, which prevents easy recognition by sequence homology. This gene encodes a 39S subunit protein, a part of which was originally isolated by its ability to recognize tyrosinase in an HLA-A24-restricted fashion.

For Research Use Only