

Recombinant Human Cyclophilin E/PPIE Protein (His Tag)

Catalog Number: PKSH032317

Note: Centrifuge before opening to ensure complete recovery of vial contents.

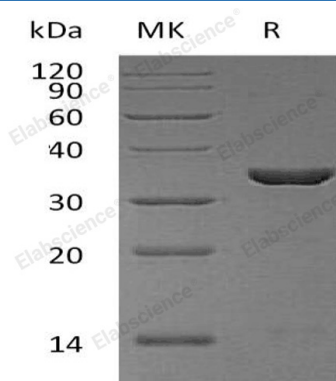
Description

Species	Human
Source	E.coli-derived Human Cyclophilin E;PPIE protein Met 1-Val301, with an N-terminal His
Calculated MW	35.6 kDa
Observed MW	34 kDa
Accession	Q9UNP9
Bio-activity	Not validated for activity

Properties

Purity	> 95 % as determined by reducing SDS-PAGE.
Concentration	Subject to label value.
Endotoxin	< 1.0 EU per µg of the protein as determined by the LAL method.
Storage	Store at < -20°C, stable for 6 months. Please minimize freeze-thaw cycles.
Shipping	This product is provided as liquid. It is shipped at frozen temperature with blue ice/gel packs. Upon receipt, store it immediately at < - 20°C.
Formulation	Supplied as a 0.2 µm filtered solution of 20mM Tris-HCl, pH 8.0.

Data



> 95 % as determined by reducing SDS-PAGE.

Background

Peptidyl-prolyl cis-trans isomerase E, also known as Cyclophilin E, Cyclophilin-33, Rotamase E, CYP33, PPIE, is an enzyme which belongs to the cyclophilin-type PPIase family of PPIase E subfamily. PPIE found in all the examined tissues including heart, brain, placenta, lung, liver, skeletal muscle, kidney and pancreas. PPIE contains one PPIase cyclophilin-type domain and one RRM (RNA recognition motif) domain. PPIE accelerates the folding of proteins. It catalyzes the cis-trans isomerization of proline imidic peptide bonds in oligopeptides. PPIE combines RNA-binding and PPIase activities. It may be involved in muscle- and brain-specific processes and pre-mRNA splicing.

For Research Use Only

Toll-free: 1-888-852-8623
Web: www.elabscience.com

Tel: 1-832-243-6086
Email: techsupport@elabscience.com

Fax: 1-832-243-6017