

Recombinant Human Oncomodulin-1/OCM Protein (His Tag)

Catalog Number: PKSH032834

Note: Centrifuge before opening to ensure complete recovery of vial contents.

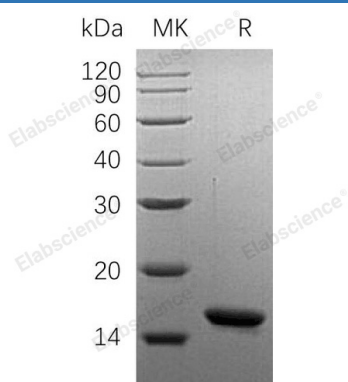
Description

Species	Human
Source	E.coli-derived Human Oncomodulin-1;OCM protein Met 1-Ser109, with an N-terminal His
Calculated MW	14.3 kDa
Observed MW	16 kDa
Accession	P0CE72
Bio-activity	Not validated for activity

Properties

Purity	> 95 % as determined by reducing SDS-PAGE.
Endotoxin	< 1.0 EU per µg of the protein as determined by the LAL method.
Storage	Generally, lyophilized proteins are stable for up to 12 months when stored at -20 to -80 °C. Reconstituted protein solution can be stored at 4-8°C for 2-7 days. Aliquots of reconstituted samples are stable at < -20°C for 3 months.
Shipping	This product is provided as lyophilized powder which is shipped with ice packs.
Formulation	Lyophilized from a 0.2 µm filtered solution of 50mM Tris-HCl, 100mM NaCl, pH 8.0. Normally 5% - 8% trehalose, mannitol and 0.01% Tween 80 are added as protectants before lyophilization.
	Please refer to the specific buffer information in the printed manual.
Reconstitution	Please refer to the printed manual for detailed information.

Data



> 95 % as determined by reducing SDS-PAGE.

Background

For Research Use Only

Toll-free: 1-888-852-8623
Web: www.elabscience.com

Tel: 1-832-243-6086
Email: techsupport@elabscience.com

Fax: 1-832-243-6017

Oncomodulin-1 (OM) is a small, calcium-binding protein and a macrophage-derived growth factor, which can promote axon regeneration in retinal ganglion cells. Oncomodulin-1 is constitutively secreted by activated macrophages in the vitreous and retina in response to inflammatory conditions that promote optic nerve regeneration. Oncomodulin-1 binds RGCs with high affinity in vitro, but only when cAMP is pharmacologically elevated or if the membrane is permeabilized allowing Oncomodulin-1 access to the cytosolic compartment. Oncomodulin-1 is a member of the superfamily of calmodulin proteins and is a high-affinity calcium ion-binding protein and contains 2 EF-hand domains. OM is found in early embryonic cells in the placenta and also in tumors. It has some calmodulin-like activity with respect to enzyme activation and growth regulation.