

GPCPD1 Polyclonal Antibody

catalog number: E-AB-19087

Note: Centrifuge before opening to ensure complete recovery of vial contents.

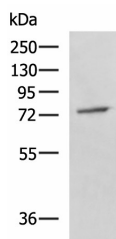
Description

| | |
|---------------------|--|
| Reactivity | Human;Mouse;Rat |
| Immunogen | Fusion protein of human GPCPD1 |
| Host | Rabbit |
| Isotype | IgG |
| Purification | Antigen affinity purification |
| Buffer | Phosphate buffered solution, pH 7.4, containing 0.05% stabilizer and 50% glycerol. |

Applications

| Applications | Recommended Dilution |
|--------------|----------------------|
| WB | 1:500-1:2000 |
| IHC | 1:50-1:100 |

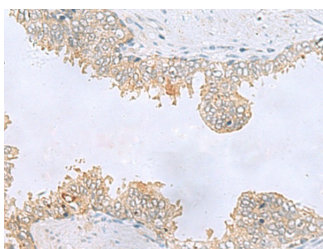
Data



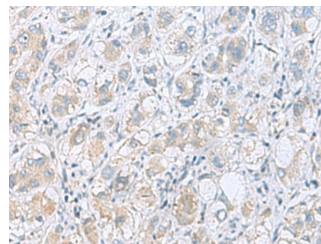
Western blot analysis of A549 cell lysate using GPCPD1 Polyclonal Antibody at dilution of 1:800

Observed-MW:Refer to figures

Calculated-MW:76 kDa



Immunohistochemistry of paraffin-embedded Human prostate cancer tissue using GPCPD1 Polyclonal Antibody at dilution of 1:55 (x200)



Immunohistochemistry of paraffin-embedded Human liver cancer tissue using GPCPD1 Polyclonal Antibody at dilution of 1:55 (x200)

Preparation & Storage

| | |
|-----------------|--|
| Storage | Store at -20°C Valid for 12 months. Avoid freeze / thaw cycles. |
| Shipping | The product is shipped with ice pack, upon receipt, store it immediately at the temperature recommended. |

Background

May be involved in the negative regulation of skeletal muscle differentiation, independently of its glycerophosphocholine phosphodiesterase activity.

For Research Use Only