

Recombinant EZH2 Monoclonal Antibody

catalog number: **AN300717L**

Note: Centrifuge before opening to ensure complete recovery of vial contents.

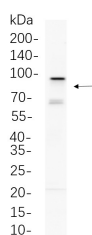
Description

Reactivity	Human;Mouse;Rat
Immunogen	Recombinant Human EZH2 protein
Host	Rabbit
Isotype	IgG,k
Clone	B656
Purification	Protein A
Buffer	PBS, 50% glycerol, 0.05% Proclin 300, 0.05% protein protectant.

Applications Recommended Dilution

IHC	1:500-1:1000
WB	1:2000-1:10000
IF	1:200-1:1000
ELISA	1:5000-1:20000

Data



Western Blot with Recombinant EZH2 Monoclonal Antibody
at dilution of 1:1000 dilution. Lane A: C6 whole cell lysate.

Observed-MW:85 kDa

Calculated-MW:85 kDa

Preparation & Storage

Storage	Store at -20°C Valid for 12 months. Avoid freeze / thaw cycles.
Shipping	Ice bag

Background

EZH2(enhancer of zeste 2 polycomb repressive complex2 subunit) Homo sapiens This gene encodes a member of the Polycomb-group (PcG) family. PcG family members form multimeric protein complexes, which are involved in maintaining the transcriptional repressive state of genes over successive cell generations. This protein associates with the embryonic ectoderm development protein, the VAV1 oncoprotein, and the X-linked nuclear protein. This protein may play a role in the hematopoietic and central nervous systems. Multiple alternatively spliced transcript variants encoding distinct isoforms have been identified for this gene.

For Research Use Only

Toll-free: 1-888-852-8623
Web: www.elabscience.com

Tel: 1-832-243-6086
Email: techsupport@elabscience.com

Fax: 1-832-243-6017

Rev. V1.2