

## CD11B Polyclonal Antibody

**catalog number: E-AB-60354**

**Note:** Centrifuge before opening to ensure complete recovery of vial contents.

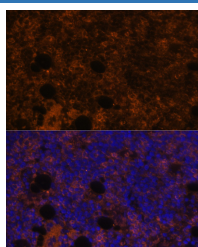
### Description

|                     |  |
|---------------------|--|
| <b>Reactivity</b>   | Human;Mouse;Rat  |
| <b>Immunogen</b>    | Recombinant fusion protein of human CD11B (NP_001139280.1).                        |
| <b>Host</b>         | Rabbit   |
| <b>Isotype</b>      | IgG  |
| <b>Purification</b> | Affinity purification  |
| <b>Buffer</b>       | Phosphate buffered solution, pH 7.4, containing 0.05% stabilizer and 50% glycerol. |

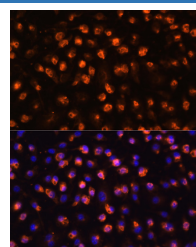
### Applications Recommended Dilution

|    |            |
|----|------------|
| IF | 1:50-1:200 |
|----|------------|

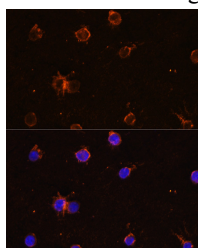
### Data



Immunofluorescence analysis of Rat bone marrow using CD11B Polyclonal Antibody at dilution of 1:100. Blue: DAPI for nuclear staining.



Immunofluorescence analysis of RAW264.7 cells using CD11B Polyclonal Antibody at dilution of 1:100. Blue: DAPI for nuclear staining.



Immunofluorescence analysis of THP-1 cells using CD11B Polyclonal Antibody at dilution of 1:100. Blue: DAPI for nuclear staining.

### Preparation & Storage

|                 |  |
|-----------------|--|
| <b>Storage</b>  | Store at -20°C Valid for 12 months. Avoid freeze / thaw cycles.  |
| <b>Shipping</b> | The product is shipped with ice pack, upon receipt, store it immediately at the temperature recommended. |

### Background

### For Research Use Only

This gene encodes the integrin alpha M chain. Integrins are heterodimeric integral membrane proteins composed of an alpha chain and a beta chain. This I-domain containing alpha integrin combines with the beta 2 chain (ITGB2) to form a leukocyte-specific integrin referred to as macrophage receptor 1 ('Mac-1'), or inactivated-C3b (iC3b) receptor 3 ('CR3'). The alpha M beta 2 integrin is important in the adherence of neutrophils and monocytes to stimulated endothelium, and also in the phagocytosis of complement coated particles. Multiple transcript variants encoding different isoforms have been found for this gene.

## For Research Use Only

Toll-free: 1-888-852-8623  
Web: [www.elabscience.com](http://www.elabscience.com)

Tel: 1-832-243-6086  
Email: [techsupport@elabscience.com](mailto:techsupport@elabscience.com)

Fax: 1-832-243-6017

Rev. V1.6