

Recombinant Human CLM-9/TREM4 Protein (His Tag)

Catalog Number: PKSH033298

Note: Centrifuge before opening to ensure complete recovery of vial contents.

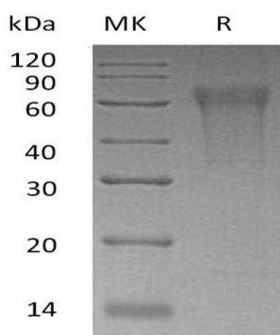
Description

Species	Human
Source	HEK293 Cells-derived Human CLM-9/TREM4 protein Leu19-Arg247, with an C-terminal His
Calculated MW	25.8 kDa
Observed MW	70-95 kDa
Accession	Q6UXG3
Bio-activity	Not validated for activity

Properties

Purity	> 90 % as determined by reducing SDS-PAGE.
Endotoxin	< 1.0 EU per µg of the protein as determined by the LAL method.
Storage	Generally, lyophilized proteins are stable for up to 12 months when stored at -20 to -80 °C. Reconstituted protein solution can be stored at 4-8°C for 2-7 days. Aliquots of reconstituted samples are stable at < -20°C for 3 months.
Shipping	This product is provided as lyophilized powder which is shipped with ice packs.
Formulation	Lyophilized from a 0.2 µm filtered solution of PBS, pH7.4. Normally 5% - 8% trehalose, mannitol and 0.01% Tween 80 are added as protectants before lyophilization. Please refer to the specific buffer information in the printed manual.
Reconstitution	Please refer to the printed manual for detailed information.

Data



> 90 % as determined by reducing SDS-PAGE.

Background

CMRF35-Like Molecule 9 (CD300LG) is a single-pass type I membrane protein which belongs to the CD300 family. CD300LG has one Ig-like V-type domain which mediates binding to lymphocyte. CD300LG is highly expressed in heart, skeletal muscle and placenta. CD300LG acts as a receptor which may mediate L-selectin-dependent lymphocyte rollings. CD300LG also binds SELL in a calcium dependent manner and lymphocyte. CD300LG may play a important role in molecular traffic across the capillary endothelium.

For Research Use Only