

HSP90 alpha Monoclonal Antibody

catalog number: **E-AB-22160**

Note: Centrifuge before opening to ensure complete recovery of vial contents.

Description

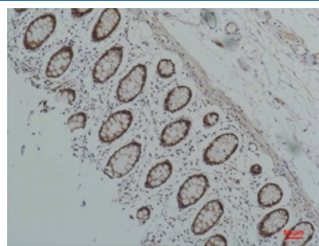
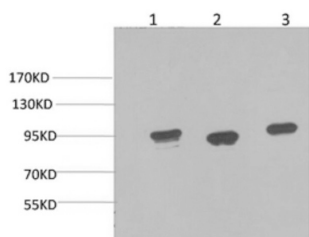
Reactivity	Human;Mouse;Rat
Immunogen	Synthesized peptide derived from the C-terminal region of human HSP90A
Host	Mouse
Isotype	IgG
Clone	1F6
Purification	Protein A purification
Buffer	Phosphate buffered solution, pH 7.4, containing 0.05% stabilizer, 0.5% protein protectant and 50% glycerol.

Applications

Recommended Dilution

WB	1:500-1:2000
IHC	1:100-1:300

Data



Western Blot analysis of 1) HeLa, 2) Mouse brain, 3) Rat brain using HSP90 alpha Monoclonal Antibody at dilution of 1:2000. Immunohistochemistry of paraffin-embedded Human colon carcinoma tissue using HSP90 alpha Monoclonal Antibody at dilution of 1:200.

Observed-MW:95 kDa

Preparation & Storage

Storage	Store at -20°C Valid for 12 months. Avoid freeze / thaw cycles.
Shipping	The product is shipped with ice pack, upon receipt, store it immediately at the temperature recommended.

Background

Molecular chaperone. Has ATPase activity.

For Research Use Only