

Recombinant Caspase 11 Monoclonal Antibody

catalog number: **E-AB-81461**

Note: Centrifuge before opening to ensure complete recovery of vial contents.

Description

| | |
|---------------------|---|
| Reactivity | Mouse |
| Immunogen | Recombinant protein of mouse Caspase-11 |
| Host | Rabbit |
| Isotype | IgG |
| Clone | R09-7H9 |
| Purification | Affinity Purified |
| Buffer | 50mM Tris-Glycine(pH 7.4), 0.15M NaCl, 40% Glycerol, 0.05% stabilizer and 0.05% protective protein. |

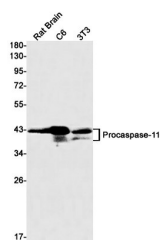
Applications

WB

Recommended Dilution

1:500-1:1000

Data



Western blot detection of Caspase-11 in C6,3T3,Hela cell
lysates using Caspase-11 Rabbit mAb(1:1000
diluted).Predicted band size:43kDa.Observed band size:
43,38,25kDa.

Observed-MW:43 /38 kDa

Calculated-MW:43 kDa

Preparation & Storage

Storage

Store at -20°C Valid for 12 months. Avoid freeze / thaw cycles.

Shipping

The product is shipped with ice pack,upon receipt,store it immediately at the
temperature recommended.

Background

For Research Use Only

Proinflammatory caspase (PubMed:8702803, PubMed:9038361, PubMed:25119034). Essential effector of NLRP3 inflammasome-dependent CASP1 activation and IL1B and IL18 secretion in response to non-canonical activators, such as UVB radiation, cholera enterotoxin subunit B and cytosolic LPS, as well as infection with Gram-negative bacteria (PubMed:22002608). Independently of NLRP3 inflammasome and CASP1, promotes pyroptosis, through GSDMD cleavage and activation, and IL1A, IL18 and HMGB1 release in response to non-canonical inflammasome activators (PubMed:22002608, PubMed:26320999, PubMed:26375003). Plays a crucial role in the restriction of Salmonella typhimurium replication in colonic epithelial cells during infection. In later stages of the infection (>3 days post infection), LPS from cytosolic Salmonella triggers CASP4 activation, which ultimately results in the pyroptosis of the infected cells and their extrusion into the gut lumen, as well as in IL18 secretion. Pyroptosis limits bacterial replication, while cytokine secretion promotes the recruitment and activation of immune cells and triggers mucosal inflammation (PubMed:25121752). Involved in LPS-induced IL6 secretion; this activity may not require caspase enzymatic activity. Involved in cell death induced by endoplasmic reticulum stress. Activated by direct binding to LPS without the need of an upstream sensor (PubMed:25119034). Does not directly process IL1B (PubMed:8702803, PubMed:9038361). During non-canonical inflammasome activation, cuts CGAS and may play a role in the regulation of antiviral innate immune activation (PubMed:28314590).

For Research Use Only