

## AF/LE Purified Anti-Human CD58 Antibody[TS2/9.1]

**Catalog Number:** GF10680

**Note:** Centrifuge before opening to ensure complete recovery of vial contents.

### Description

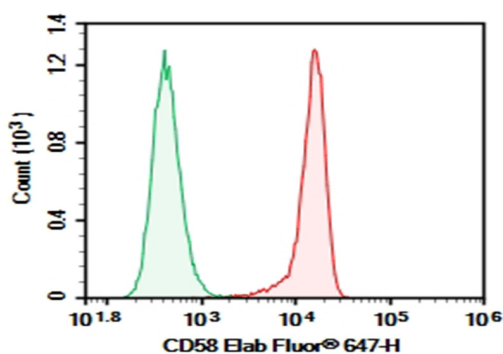
<b>Reactivity</b>	Human
<b>Immunogen</b>	Recombinant Human CD58 protein
<b>Host</b>	Mouse
<b>Isotype</b>	Mouse IgG1, $\kappa$
<b>Clone</b>	TS2/9.1
<b>Purification</b>	>98%, Protein A/G purified
<b>Conjugation</b>	None (AF/LE)
<b>Buffer</b>	Sterile PBS, pH 7.2. < 1.0 EU per mg of the antibody as determined by the LAL method.

### Applications

### Recommended Dilution

<b>FCM</b>	2 $\mu\text{g/mL}$ ( $0.5 \times 10^6$ - $1 \times 10^6$ cells)
------------	---

### Data



Human peripheral blood lymphocytes were stained with 0.2  $\mu\text{g}$  AF/LE Purified Anti-Human CD58 Antibody[TS2/9.1] (Right) and 0.2  $\mu\text{g}$  Mouse IgG1,  $\kappa$  Isotype Control (Left), followed by FITC-conjugated Goat Anti-Mouse IgG Secondary Antibody.

### Preparation & Storage

<b>Storage</b>	Store at 4°C valid for 12 months or -20°C valid for long term storage, avoid freeze / thaw cycles. This preparation contains no preservatives, thus it should be handled under aseptic conditions.
<b>Shipping</b>	Ice bag

### Background

CD58, also known as lymphocyte function-associated antigen 3 (LFA-3) is a 45-70 kD cell surface protein that is a member of the immunoglobulin superfamily. Alternative splicing of CD58 gives rise to transmembrane and glycosylphosphatidylinositol (GPI)-anchored forms on cell surface. CD58 is expressed on both hematopoietic and non-hematopoietic cells including B cells, T cells, monocytes, erythrocytes, endothelial cells, epithelial cells, and fibroblasts. High levels are observed on memory T cells and dendritic cells. CD58 expressed on antigen presenting cells and target cells enhances T cell recognition via the binding of its cognate ligand, CD2, on the T cell surface.