

## RUNX1 Polyclonal Antibody

**catalog number: E-AB-60579**

**Note:** Centrifuge before opening to ensure complete recovery of vial contents.

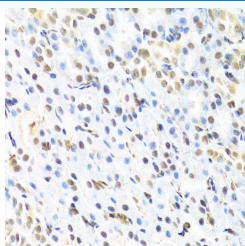
### Description

<b>Reactivity</b>	Human;Mouse;Rat
<b>Immunogen</b>	A synthetic peptide of human RUNX1 (NP_001745.2).
<b>Host</b>	Rabbit
<b>Isotype</b>	IgG
<b>Purification</b>	Affinity purification
<b>Buffer</b>	Phosphate buffered solution, pH 7.4, containing 0.05% stabilizer and 50% glycerol.

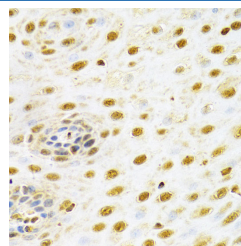
### Applications

Applications	Recommended Dilution
IHC	1:50-1:100
IF	1:50-1:200

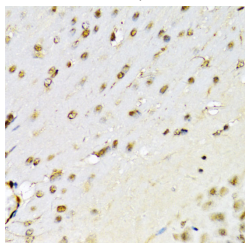
### Data



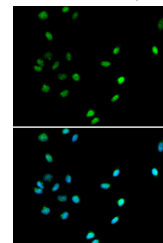
Immunohistochemistry of paraffin-embedded Rat kidney using RUNX1 Polyclonal Antibody at dilution of 1:100 (40x lens).



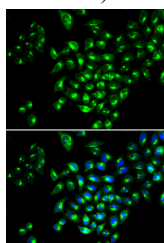
Immunohistochemistry of paraffin-embedded Human esophageal cancer using RUNX1 Polyclonal Antibody at dilution of 1:100 (40x lens).



Immunohistochemistry of paraffin-embedded Mouse brain using RUNX1 Polyclonal Antibody at dilution of 1:100 (40x lens).



Immunofluorescence analysis of A549 cells using RUNX1 Polyclonal Antibody



Immunofluorescence analysis of MCF-7 cells using RUNX1 Polyclonal Antibody

### Preparation & Storage

**Storage** Store at -20°C Valid for 12 months. Avoid freeze / thaw cycles.

### For Research Use Only

**Shipping**

The product is shipped with ice pack, upon receipt, store it immediately at the temperature recommended.

**Background**

Core binding factor (CBF) is a heterodimeric transcription factor that binds to the core element of many enhancers and promoters. The protein encoded by this gene represents the alpha subunit of CBF and is thought to be involved in the development of normal hematopoiesis. Chromosomal translocations involving this gene are well-documented and have been associated with several types of leukemia. Three transcript variants encoding different isoforms have been found for this gene.

**For Research Use Only**