

KRI1 Polyclonal Antibody

catalog number: E-AB-66158

Note: *Centrifuge before opening to ensure complete recovery of vial contents.*

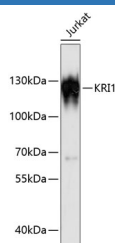
Description

Reactivity	Human
Immunogen	Recombinant fusion protein of human KRI1 (NP_075384.3).
Host	Rabbit
Isotype	IgG
Purification	Affinity purification
Buffer	Phosphate buffered solution, pH 7.4, containing 0.05% stabilizer and 50% glycerol.

Applications Recommended Dilution

WB	1:500-1:2000
-----------	--------------

Data



Western blot analysis of extracts of Jurkat cells using KRI1

Polyclonal Antibody at dilution of 1:3000.

Observed-MV:120 kDa

Calculated-MV:82 kDa

Preparation & Storage

Storage	Store at -20°C Valid for 12 months. Avoid freeze / thaw cycles.
Shipping	The product is shipped with ice pack, upon receipt, store it immediately at the temperature recommended.

Background

This gene overlaps with the gene for cysteine endopeptidase AUT-like 4 in a head-to-tail orientation.

For Research Use Only