

PRKCSH Polyclonal Antibody

Catalog Number: E-AB-53187



Note: Centrifuge before opening to ensure complete recovery of vial contents.

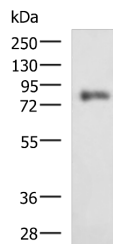
Description

Reactivity	Human, Mouse
Immunogen	Fusion protein of human PRKCSH
Host	Rabbit
Isotype	IgG
Purification	Antigen affinity purification
Conjugation	Unconjugated
Formulation	PBS with 0.05% NaN ₃ and 40% Glycerol, pH7.4

Applications Recommended Dilution

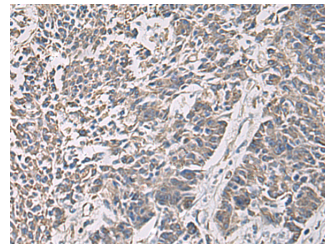
WB	1:500-1:2000
IHC	1:100-1:300
ELISA	1:5000-1:10000

Data

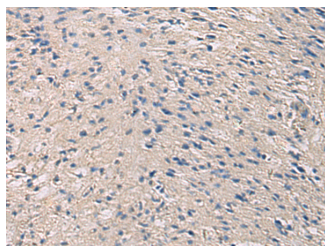


Western blot analysis of HepG2 cell lysate using PRKCSH Polyclonal Antibody at dilution of 1:1350

Observed Mw: Refer to figures
Calculated Mw: 59 kDa



Immunohistochemistry of paraffin-embedded Human colorectal cancer tissue using PRKCSH Polyclonal Antibody at dilution of 1:90 (x200)



Immunohistochemistry of paraffin-embedded Human brain tissue using PRKCSH Polyclonal Antibody at dilution of 1:90 (x200)

Preparation & Storage

Storage Store at -20°C. Avoid freeze / thaw cycles.

Background

This gene encodes the beta-subunit of glucosidase II, an N-linked glycan-processing enzyme in the endoplasmic reticulum.

For Research Use Only

A Reliable Research Partner in Life Science and Medicine

Toll-free: 1-888-852-8623

Web: www.elabscience.com

Tel: 1-832-243-6086

Email: techsupport@elabscience.com

Fax: 1-832-243-6017

PRKCSH Polyclonal Antibody

Catalog Number: E-AB-53187



The encoded protein is an acidic phosphoprotein known to be a substrate for protein kinase C. Mutations in this gene have been associated with the autosomal dominant polycystic liver disease. Alternative splicing results in multiple transcript variants. PRKCSH (Protein Kinase C Substrate 80K-H) is a Protein Coding gene. Diseases associated with PRKCSH include Polycystic Liver Disease and Polycystic Kidney And Hepatic Disease. Among its related pathways are Advanced glycosylation endproduct receptor signaling and Innate Immune System. GO annotations related to this gene include calcium ion binding and ion channel binding.

For Research Use Only

A Reliable Research Partner in Life Science and Medicine

Toll-free: 1-888-852-8623

Tel: 1-832-243-6086

Fax: 1-832-243-6017

Web: www.elabscience.com

Email: techsupport@elabscience.com