

INTS10 Polyclonal Antibody

Catalog Number: E-AB-14639



Note: Centrifuge before opening to ensure complete recovery of vial contents.

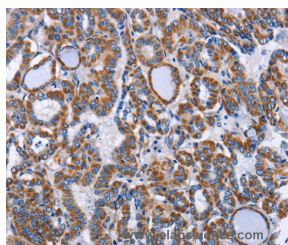
Description

Reactivity	Human, Mouse
Immunogen	Recombinant protein of human INTS10
Host	Rabbit
Isotype	IgG
Purification	Affinity purification
Conjugation	Unconjugated
Formulation	PBS with 0.05% sodium azide and 50% glycerol, PH7.4

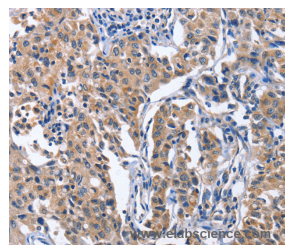
Applications Recommended Dilution

IHC	1:50-1:200
------------	------------

Data



Immunohistochemistry of paraffin-embedded Human thyroid cancer tissue using INTS10 Polyclonal Antibody at dilution 1:50



Immunohistochemistry of paraffin-embedded Human lung cancer tissue using INTS10 Polyclonal Antibody at dilution 1:50

Preparation & Storage

Storage Store at -20°C. Avoid freeze / thaw cycles.

Background

INTS10 is a subunit of the Integrator complex, which associates with the C-terminal domain of RNA polymerase II large subunit and mediates 3-prime end processing of small nuclear RNAs U1. INTS10 (integrator complex subunit 10) is also known as INT10 and is a 710 amino acid protein that is localized to the nucleus. INTS10 is a component of the integrator complex and, as such, is thought to aid in the regulation of 3'-end processing of spliceosomal U1 and U2 snRNAs.

For Research Use Only

A Reliable Research Partner in Life Science and Medicine

Toll-free: 1-888-852-8623

Web: www.elabscience.com

Tel: 1-832-243-6086

Email: techsupport@elabscience.com

Fax: 1-832-243-6017