

## PADI4 Polyclonal Antibody

catalog number: **E-AB-52164**

**Note:** Centrifuge before opening to ensure complete recovery of vial contents.

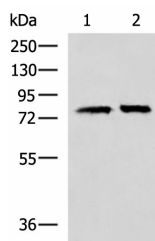
### Description

<b>Reactivity</b>	Human
<b>Immunogen</b>	Fusion protein of human PADI4
<b>Host</b>	Rabbit
<b>Isotype</b>	IgG
<b>Purification</b>	Antigen affinity purification
<b>Buffer</b>	Phosphate buffered solution, pH 7.4, containing 0.05% stabilizer and 50% glycerol.

### Applications

Applications	Recommended Dilution
<b>WB</b>	1:500-1:2000
<b>IHC</b>	1:40-1:200

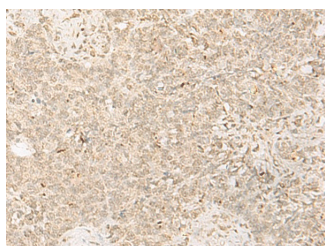
### Data



Western blot analysis of 293T cell lysates using PADI4 Polyclonal Antibody at dilution of 1:400

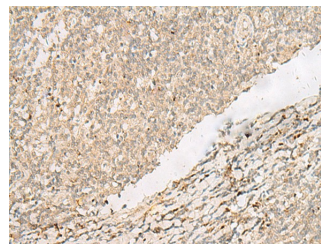
**Observed-MW: Refer to figures**

**Calculated-MW: 74 kDa**



Immunohistochemistry of paraffin-embedded Human ovarian cancer tissue using PADI4 Polyclonal Antibody at dilution of

1:35 (x200)



Immunohistochemistry of paraffin-embedded Human tonsil tissue using PADI4 Polyclonal Antibody at dilution of 1:35 (x200)

### Preparation & Storage

<b>Storage</b>	Store at -20°C Valid for 12 months. Avoid freeze / thaw cycles.
<b>Shipping</b>	The product is shipped with ice pack, upon receipt, store it immediately at the temperature recommended.

### Background

### For Research Use Only

This gene is a member of a gene family which encodes enzymes responsible for the conversion of arginine residues to citrulline residues. This gene may play a role in granulocyte and macrophage development leading to inflammation and immune response. PADI4 plays a role in the epigenetics, the deimination of arginines on histones 3 and 4 can act antagonistically to arginine methylation. The protein may be found in oligomers and binds 5 calcium ions per subunit. It catalyses the reaction: Protein L-arginine + H<sub>2</sub>O = protein L-citrulline + NH<sub>3</sub>.

## For Research Use Only

Toll-free: 1-888-852-8623  
Web: [www.elabscience.com](http://www.elabscience.com)

Tel: 1-832-243-6086  
Email: [techsupport@elabscience.com](mailto:techsupport@elabscience.com)

Fax: 1-832-243-6017

Rev. V1.8