

MB Polyclonal Antibody

catalog number: E-AB-40504

Note: Centrifuge before opening to ensure complete recovery of vial contents.

Description

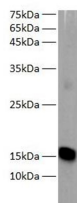
Reactivity	Human;Mouse;Rat;Zebrafish
Immunogen	Recombinant human MB protein expressed by E.coli
Host	Rabbit
Isotype	IgG
Purification	Antigen Affinity Purification
Conjugation	Unconjugated
Buffer	PBS with 0.05% Proclin300, 1% protective protein and 50% glycerol, pH7.4

Applications

Recommended Dilution

WB	1:1000-5000
-----------	-------------

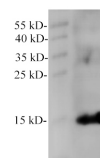
Data



Western blot of Zebrafish whole lysates with anti-MB rabbit polyclonal antibody at dilution of 1:1000.

Observed-MW:16 kDa

Calculated-MW:16 kDa



Western blot of MCF7 with anti-MB rabbit polyclonal antibody at dilution of 1:1000.

Observed-MW:16 kDa

Calculated-MW:16 kDa

Preparation & Storage

Storage	Store at -20°C Valid for 12 months. Avoid freeze / thaw cycles.
Shipping	The product is shipped with ice pack, upon receipt, store it immediately at the temperature recommended.

Background

Myoglobin (symbol Mb or MB) is an iron- and oxygen-binding protein found in the muscle tissue of vertebrates in general and in almost all mammals. Myoglobin is released from damaged muscle tissue such as heart, making it a sensitive marker for muscle injury.