

CDADC1 Polyclonal Antibody

Catalog Number:E-AB-18595



Note: Centrifuge before opening to ensure complete recovery of vial contents.

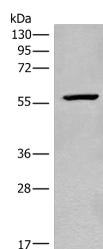
Description

Reactivity	Human, Mouse
Immunogen	Full length fusion protein
Host	Rabbit
Isotype	IgG
Purification	Antigen affinity purification
Conjugation	Unconjugated
Formulation	PBS with 0.05% NaN3 and 40% Glycerol,pH7.4

Applications Recommended Dilution

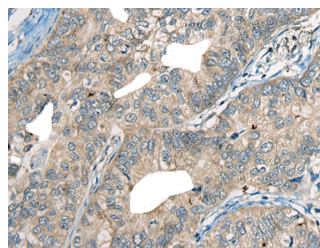
WB	1:500-1:2000
IHC	1:50-1:300
ELISA	1:5000-1:10000

Data

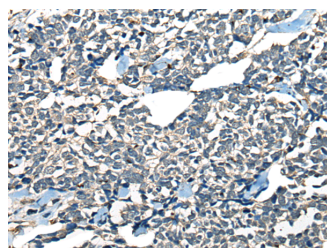


Western blot analysis of Mouse heart tissue lysate using CDADC1 Polyclonal Antibody at dilution of 1:450

Observed MW:Refer to figures
Calculated Mw:58 kDa



Immunohistochemistry of paraffin-embedded Human gastric cancer tissue using CDADC1 Polyclonal Antibody at dilution of 1:60(×200)



Immunohistochemistry of paraffin-embedded Human lung cancer tissue using CDADC1 Polyclonal Antibody at dilution of 1:60(×200)

Preparation & Storage

Storage Store at -20°C. Avoid freeze / thaw cycles.

Background

For Research Use Only

A Reliable Research Partner in Life Science and Medicine

Toll-free: 1-888-852-8623

Web: www.elabscience.com

Tel: 1-832-243-6086

Email: techsupport@elabscience.com

Fax: 1-832-243-6017

CDADC1 Polyclonal Antibody

Catalog Number: E-AB-18595



NYD-SP15 (testis development protein NYD-SP15), also known as CDADC1 (cytidine and dCMP deaminase domain containing 1), is a widely expressed protein with predominant expression in the testis, liver, spleen, kidney, thymus and placenta. NYD-SP15 is 514 amino acids in length and belongs to the cytidine and deoxycytidylate deaminase family. It is developmentally regulated with higher expression in adult testis than fetal testis and is believed to participate in spermatogenesis and testicular development. This suggests that NYD-SP15 may be a determining factor in male infertility. Due to alternative splicing events, four transcript variants exist for NYD-SP15.

For Research Use Only

A Reliable Research Partner in Life Science and Medicine

Toll-free: 1-888-852-8623

Tel: 1-832-243-6086

Fax: 1-832-243-6017

Web: www.elabscience.com

Email: techsupport@elabscience.com