

Recombinant Mouse BCR protein (His tag)

Catalog Number:PDEM100077



Note: Centrifuge before opening to ensure complete recovery of vial contents.

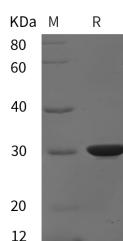
Description

Synonyms	ALL;Breakpoint cluster region;CML;D22S662;FGFR1/BCR chimera protein;PHLRenal carcinoma antigen NY-REN-26
Species	Mouse
Expression Host	E.coli
Sequence	Ser 618-Leu 824
Accession	Q6PAJ1
Calculated Molecular Weight	22.7 kDa
Observed molecular weight	30 kDa
Tag	N-His

Properties

Purity	> 95 % as determined by reducing SDS-PAGE.
Endotoxin	Please contact us for more information.
Storage	Generally, lyophilized proteins are stable for up to 12 months when stored at -20 to -80°C. Reconstituted protein solution can be stored at 4-8°C for 2-7 days. Aliquots of reconstituted samples are stable at < -20°C for 3 months.
Shipping	This product is provided as lyophilized powder which is shipped with ice packs.
Formulation	Lyophilized from sterile PBS, pH 7.4. Normally 5 % - 8 % trehalose, mannitol and 0.01 % Tween80 are added as protectants before lyophilization. Please refer to the specific buffer information in the printed manual.
Reconstitution	Please refer to the printed manual for detailed information.

Data



> 95 % as determined by reducing SDS-PAGE.

Background

The Bcr gene was originally identified by its presence in the chimeric Bcr-Abl oncogene. The amino-terminal region of Bcr contains an oligomerization domain, a serine/threonine kinase domain, and a region that binds SH2 domains. The middle of the protein has a PH domain and a region of sequence similarity to the guanine nucleotide exchange factors for the Rho family of GTP binding proteins. The carboxy-terminal region may be involved in a GTPase activating function for the small GTP-binding protein Rac. The function of wild type Bcr in cells remains unclear. PDGF receptor may use Bcr as a downstream signaling mediator. Research studies have shown that the Bcr-Abl fusion results in production of a constitutively active tyrosine kinase, which causes chronic myelogenous leukemia (CML). Tyr177 of Bcr is

For Research Use Only

A Reliable Research Partner in Life Science and Medicine

Toll-free: 1-888-852-8623

Web: www.elabscience.com

Tel: 1-832-243-6086

Email: techsupport@elabscience.com

Fax: 1-832-243-6017

Recombinant Mouse BCR protein (His tag)

Catalog Number: PDEM100077



phosphorylated in the Bcr-Abl fusion protein, which plays an important role in transforming the activity of Bcr-Abl). Phosphorylated Tyr177 provides a docking site for Gab2 and GRB2.

For Research Use Only

A Reliable Research Partner in Life Science and Medicine

Toll-free: 1-888-852-8623

Web: www.elabscience.com

Tel: 1-832-243-6086

Email: techsupport@elabscience.com

Fax: 1-832-243-6017